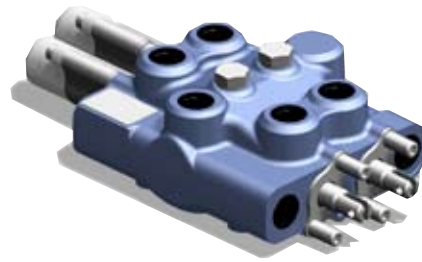


The 9210 valve series is a cost-effective monoblock solution that is available in two and three spool versions. This designed specifically for loader applications up to 75 lpm. This compact, open-center valve series will maximize loader performance.



FEATURES & SPECIFICATIONS

- 207 bar (3000 psi) maximum operating pressure
- 143 bar (2080 psi) maximum tank core pressure
- 76 lpm (20 gpm) maximum pump flow
- Open (tandem) center operation
- Low work port leakage
- Low operating efforts
- Precise metering
- Load drop check valve for each spool
- Right or left hand convertible

OPTIONS

- SAE, BSP, JIS or metric straight thread ports
 - Power beyond capability
 - End Mechanisms:
 - pring centered
 - detent – single or multi-position
 - 4th position float
 - Hydraulic remote
 - Main relief valve:
 - pilot operated relief valve
 - pilot operated relief valve/anti-cavitation check combination
 - direct acting relief valve
 - externally ventable check
 - pilot operated, dual setting relief
 - Single function and joystick handle assemblies
- Three position 4-way, four position float and three or four position regenerative spools available

e-mail: sales@huscointl.com website: www.huscointl.com

World Headquarters

HUSCO International, Inc.
 2239 Pewaukee Road
 Waukesha, WI 53188
 Phone: 1-262-513-4200
 Fax: 1-262-513-4240

European Headquarters

HUSCO International, Ltd.
 6 Rivington Road
 Whitehouse Industrial
 Estate Runcorn, Cheshire,
 England WA7 3DT
 Phone: (44)-1928-701888
 Fax: (44)-1928-710813

India Headquarters

HUSCO Hydraulics Private Ltd.
 Plot A4 - Talegaon Floriculture
 Ind. Estate - MIDC
 Village - Navlakh Umbre,
 Talegaon, Puna 410507, India
 Phone: (91)-2114-305301

Pacific Rim Headquarters

HUSCO Kayaba Hydraulics
 (Shanghai) Ltd.
 No. 235 Jiangtian Road East
 Song Jiang Industrial Zone
 Shanghai, 201600
 P.R. China
 Phone: (86)-21-5774-6468
 Fax: (86)-21-3774-0186

HUSCO Brazil

Rua Jaragua 397 sala 702
 Porto Alegre RS 90-450-140
 Brazil
 Phone: (55)-51-3388-4367
 Fax: (55)-51-3321-4291