
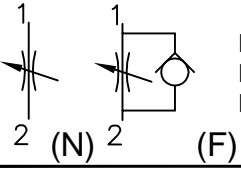

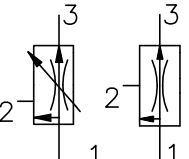
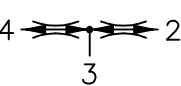

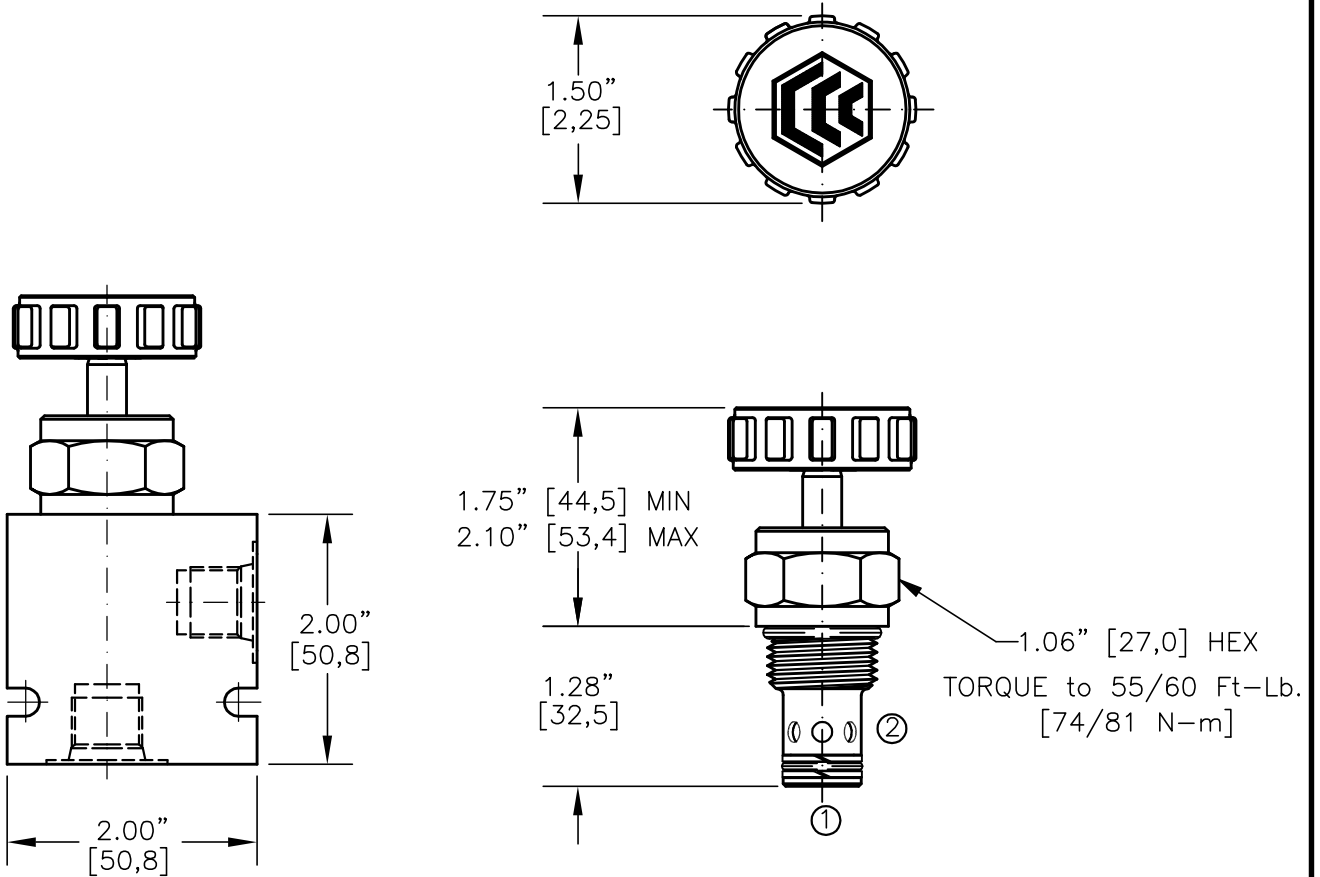
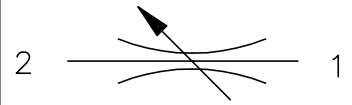


Flow Control Valves

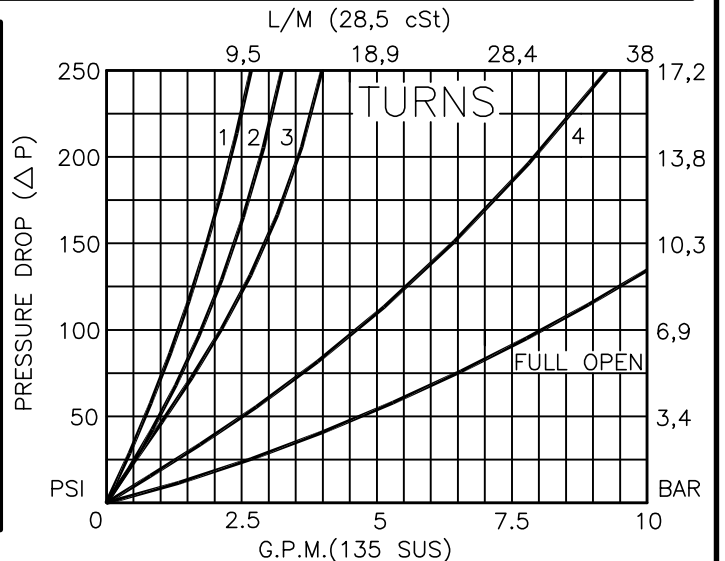
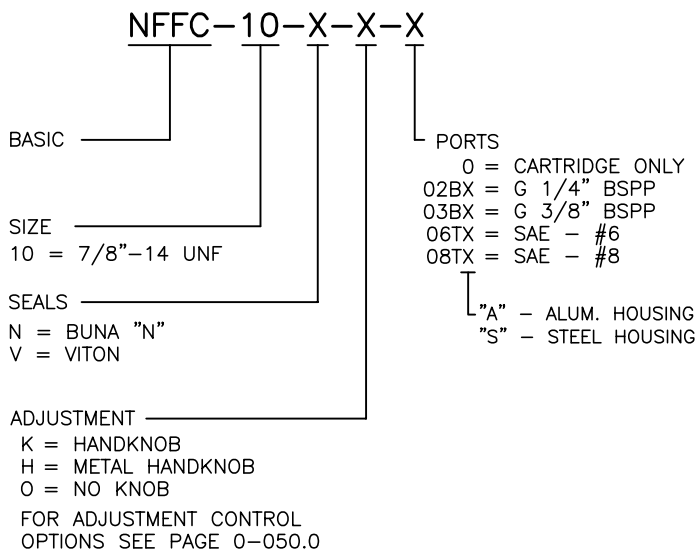
	MODEL	DESCRIPTION	FLOW	CAVITY	PAGE NO.
	NFCV-08	BI-DIRECTIONAL NEEDLE VALVE	10 GPM	C0820	2-011.0
	NFCV-10	BI-DIRECTIONAL NEEDLE VALVE	18 GPM	C1020	2-012.0
	NFFC-10	BI-DIR NEEDLE VALVE FINE ADJUST	8 GPM	C1020	2-002.0
	FCVL-08	FORWARD GUIDED POPPET TYPE	10 GPM	C0820	2-021.0
	FCVL-10		18 GPM	C1020	2-022.0
	FCVL-12		36 GPM	C1220	2-023.0
	PCFC-08	PRESS COMP FIXED ORIFICE RESTRICTIVE	6 GPM	C0820	2-031.0
	PCFC-10		12 GPM	C1020	2-032.0
	PCFC-12		24 GPM	C1220	2-033.0
	BFCV-08	PRESS COMP FIXED ORIFICE PRIORITY	6 GPM	C0830	2-051.0
	BFCV-10		12 GPM	C1030	2-052.0
	BFCV-12		20 GPM	C1230	2-053.0
	BFCV-16		30 GPM	C1630	2-054.0
	FDCV-08	FLOW DIVIDER/COMBINER SPOOL TYPE	8 GPM	C0840	2-101.0
	FDCV-10		16 GPM	C1040	2-102.0
	FDCV-12		32 GPM	C1240	2-103.0
	MRFC-10	MANUAL ROTARY FLOW CONTROL VALVE	18 GPM	C1020	2-202.0



NEEDLE VALVE BI-DIRECTIONAL, POSITIVE SHUT-OFF, FINE ADJUSTMENT



FOR ALUMINUM OR STEEL VALVE HOUSING CONFIGURATIONS SEE PAGE 0-012.1





NEEDLE VALVE BI-DIRECTIONAL POSITIVE SHUT-OFF, FINE ADJUSTMENT

DESCRIPTION

This unit is a SCREW IN, cartridge type, non-compensated, adjustable, bi-directional fine adjustment needle flow control valve.

OPERATIONS

This valve increases its orifice value from fully closed to fully open in 4 1/2 turns with counterclockwise rotation.

Positive shut-off.

FEATURES AND BENEFITS

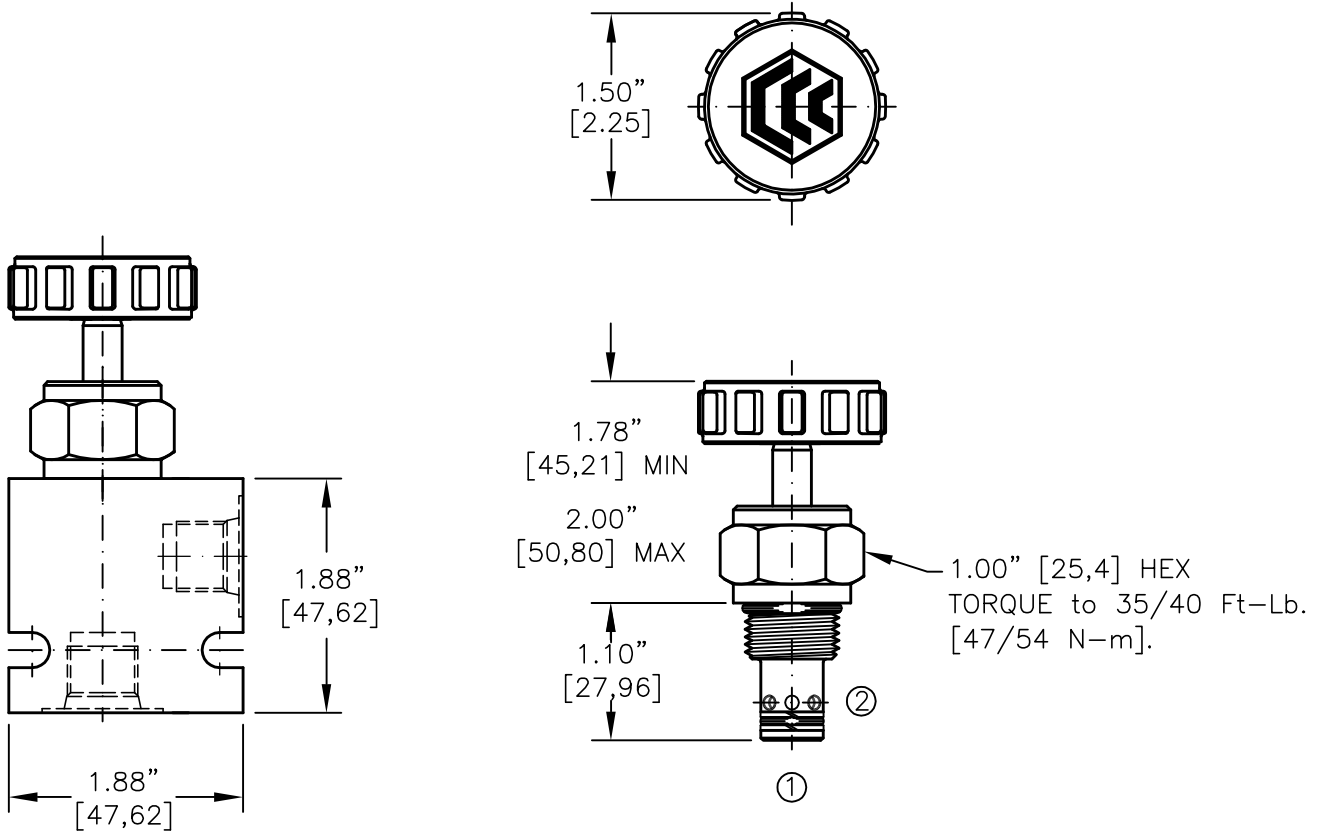
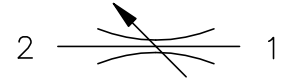
Fine and low effort leakproof adjustment.
Effective adjustment is precisely controlled to 4 1/2 turns.
All external carbon steel parts are plated for longer life against the elements.
All cartridge valves are 100% functionally tested.
Industry common cavity.

SPECIFICATIONS

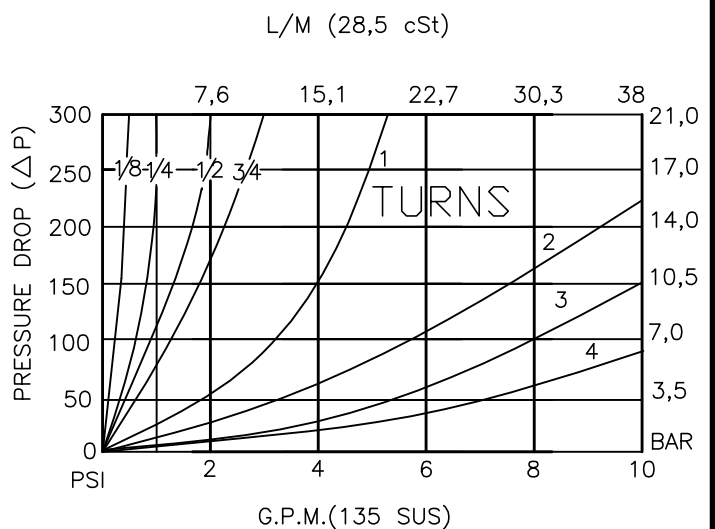
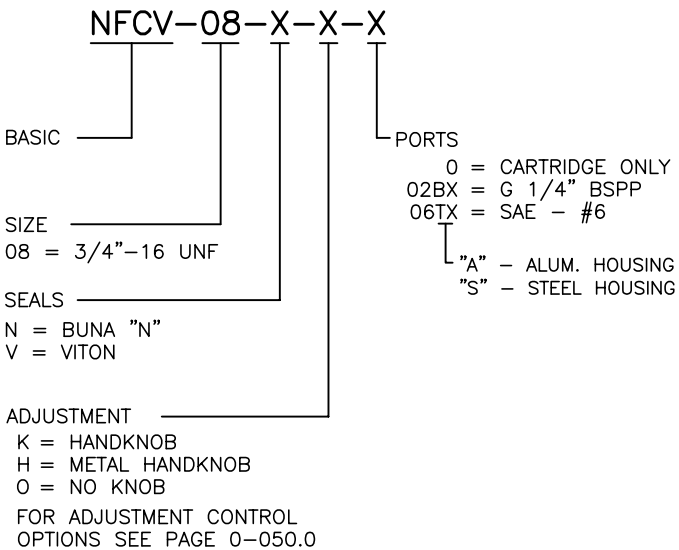
OPERATING PRESSURE: 5,000 PSI [350 Bar]
PROOF PRESSURE: 10,000 PSI [700 Bar]
FLOW: 8.0 GPM [30 l/m] nominal. See performance chart.
INTERNAL LEAKAGE: ZERO drops per minute maximum @ 5,000 PSI (350 Bar)
VALVE HOUSINGS: 2500 PSI [175 Bar] = Aluminum - Anodized.
5000 PSI [350 Bar] = Steel - Unplated.
OPERATING TEMPERATURE: -40° to +250° F. [-40° to +120° C.]
OPERATING MEDIA: All general purpose hydraulic fluids such as
MIL-H-5606, SAE-#10, SAE-#20, etc.
INSTALLATION: No restrictions.
SEAL KIT: SKN-1022 Buna "N".
SKV-1022 Viton.
WEIGHT: .31 lb [.14 kg] cartridge only.
VALVE CAVITY: #C1020, See Page 0-012.0.



NEEDLE VALVE BI-DIRECTIONAL, POSITIVE SHUT-OFF



FOR ALUMINUM OR STEEL VALVE HOUSING CONFIGURATIONS SEE PAGE 0-011.1





NEEDLE VALVE BI-DIRECTIONAL, POSITIVE SHUT-OFF

DESCRIPTION

This unit is a SCREW IN, cartridge type, non-compensated, adjustable, bi-directional needle flow control valve.

OPERATIONS

This valve increases its orifice value from fully closed to fully open in 4 1/2 turns with counterclockwise rotation. Positive shut-off.

FEATURES AND BENEFITS

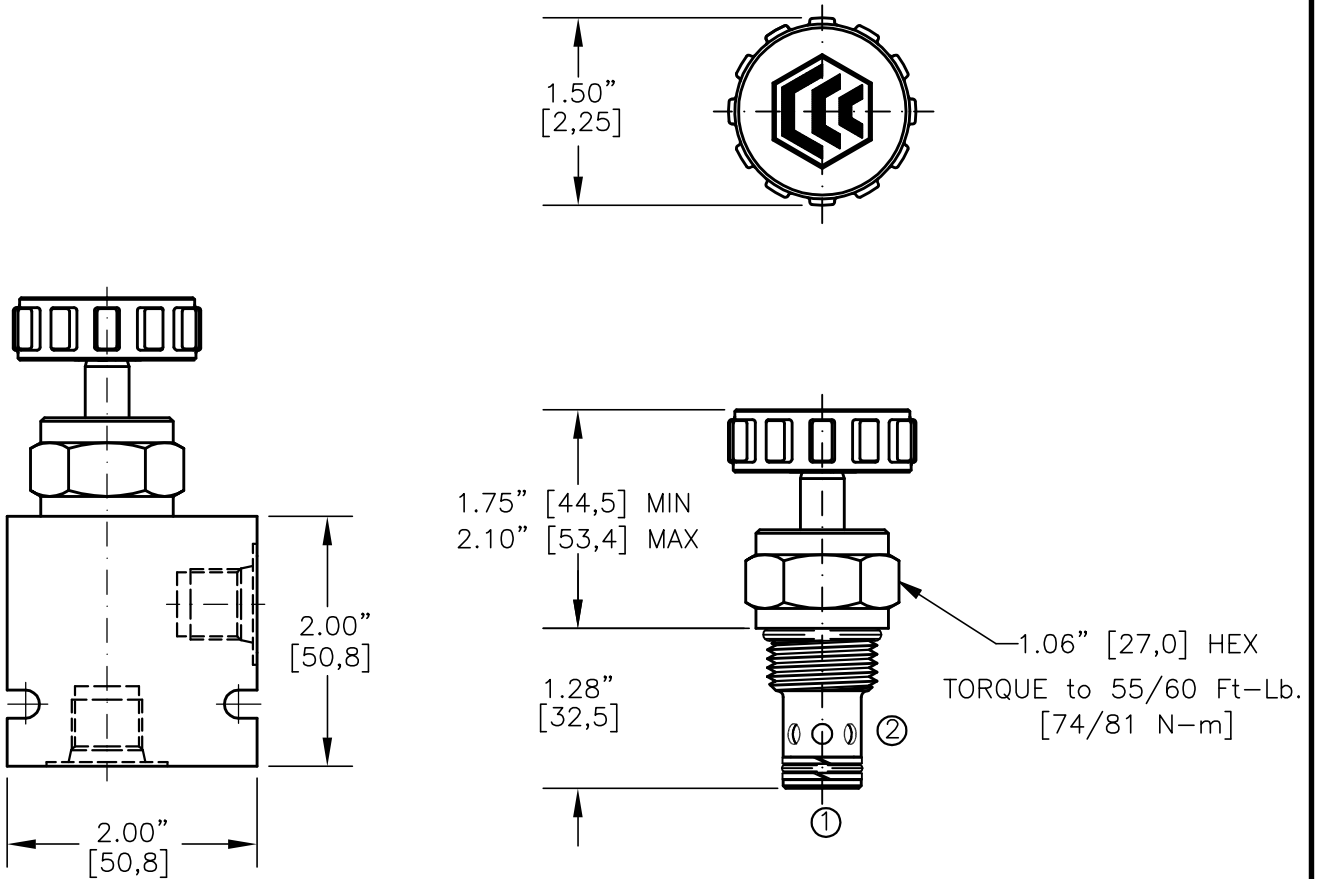
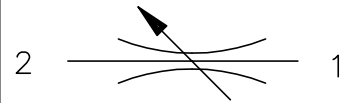
Fine and low effort leakproof adjustment.
Effective adjustment is linear to 4 1/2 turns.
All external carbon steel parts are plated for longer life against the elements.
All cartridge valves are 100% functionally tested.
Industry common cavity.

SPECIFICATIONS

OPERATING PRESSURE: 5,000 PSI [350 Bar]
PROOF PRESSURE: 10,000 PSI [700 Bar]
FLOW: 10.0 GPM [38 l/m] nominal. See performance chart.
INTERNAL LEAKAGE: ZERO drops per minute maximum @ 5,000 PSI (350 Bar)
VALVE HOUSINGS: 2500 PSI [175 Bar] = Aluminum - Anodized.
5000 PSI [350 Bar] = Steel - Unplated.
OPERATING TEMPERATURE: -40° to +250° F. [-40° to +120° C.]
OPERATING MEDIA: All general purpose hydraulic fluids such as
MIL-H-5606, SAE-#10, SAE-#20, etc.
INSTALLATION: No restrictions.
SEAL KIT: SKN-0822 Buna "N".
SKV-0822 Viton.
WEIGHT: .22 lb [.10 kg] cartridge only.
VALVE CAVITY: #C0820, See Page 0-011.0.



NEEDLE VALVE BI-DIRECTIONAL, POSITIVE SHUT-OFF.



FOR ALUMINUM OR STEEL VALVE HOUSING CONFIGURATIONS SEE PAGE 0-012.1

NFCV-10-X-X-X

BASIC

SIZE

10 = 7/8"-14 UNF

SEALS

N = BUNA "N"
V = VITON

ADJUSTMENT

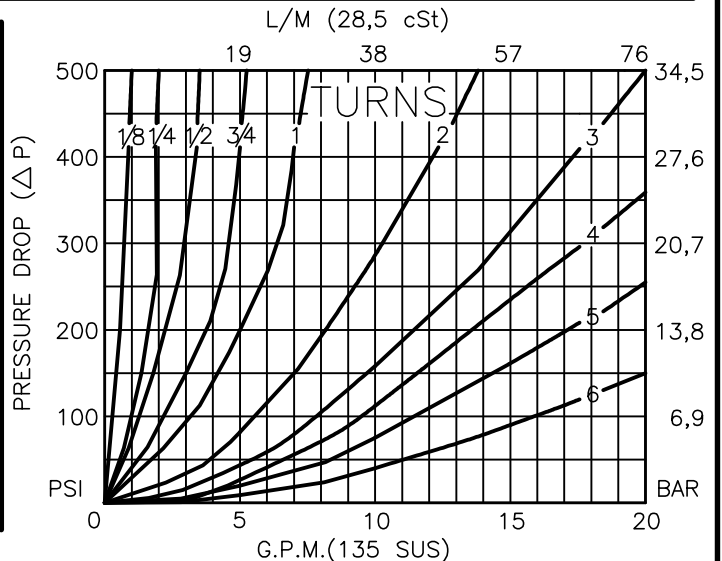
K = HANDKNOB
H = METAL HANDKNOB
O = NO KNOB

FOR ADJUSTMENT CONTROL
OPTIONS SEE PAGE 0-050.0

PORTS

0 = CARTRIDGE ONLY
02BX = G 1/4" BSPP
03BX = G 3/8" BSPP
06TX = SAE - #6
08TX = SAE - #8

"A" - ALUM. HOUSING
"S" - STEEL HOUSING





NEEDLE VALVE BI-DIRECTIONAL, POSITIVE SHUT-OFF.

DESCRIPTION

This unit is a SCREW IN, cartridge type, non-compensated, adjustable, bi-directional needle flow control valve.

OPERATIONS

This valve increases its orifice value from fully closed to fully open in 7 turns with counterclockwise rotation.

Positive shut-off.

FEATURES AND BENEFITS

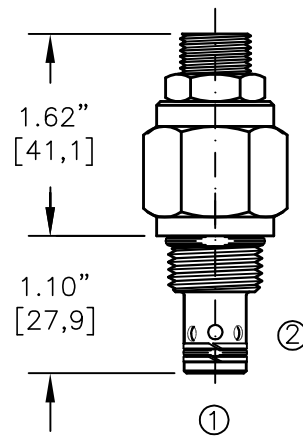
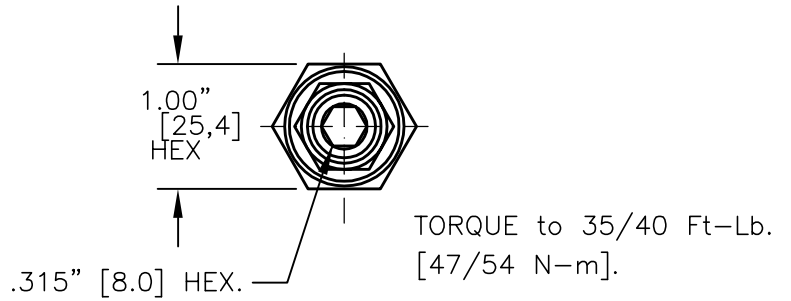
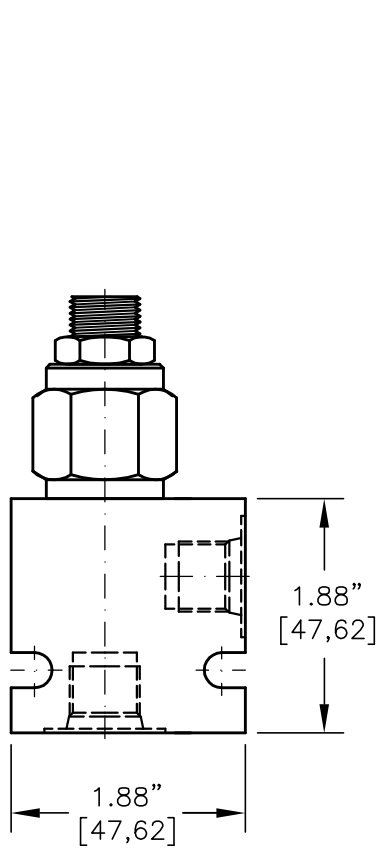
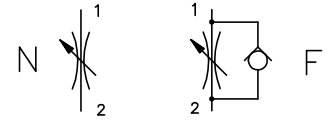
Fine and low effort leakproof adjustment.
Effective adjustment is linear to seven turns.
All external carbon steel parts are plated for longer life against the elements.
All cartridge valves are 100% functionally tested.
Industry common cavity.

SPECIFICATIONS

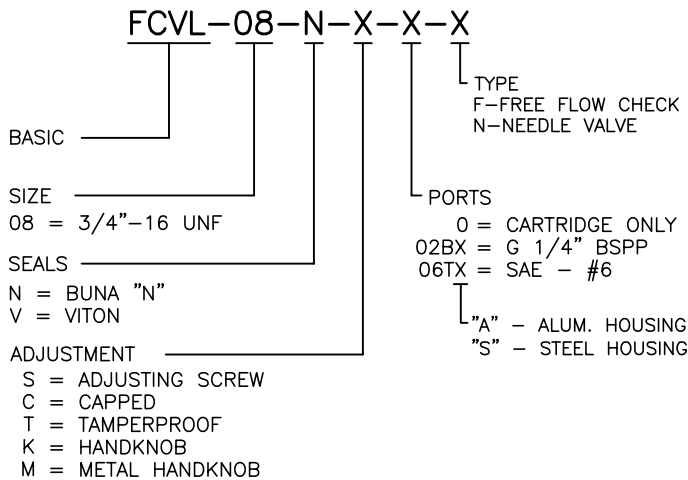
OPERATING PRESSURE: 5,000 PSI [350 Bar]
PROOF PRESSURE: 10,000 PSI [700 Bar]
FLOW: 18.0 GPM [68 l/m] nominal. See performance chart.
INTERNAL LEAKAGE: ZERO drops per minute maximum @ 5,000 PSI (350 Bar)
VALVE HOUSINGS: 2500 PSI [175 Bar] = Aluminum - Anodized.
5000 PSI [350 Bar] = Steel - Unplated.
OPERATING TEMPERATURE: -40° to +250° F. [-40° to +120° C.]
OPERATING MEDIA: All general purpose hydraulic fluids such as
MIL-H-5606, SAE-#10, SAE-#20, etc.
INSTALLATION: No restrictions.
SEAL KIT: SKN-1022 Buna "N".
SKV-1022 Viton.
WEIGHT: .31 lb [.14 kg] cartridge only.
VALVE CAVITY: #C1020, See Page 0-012.0.



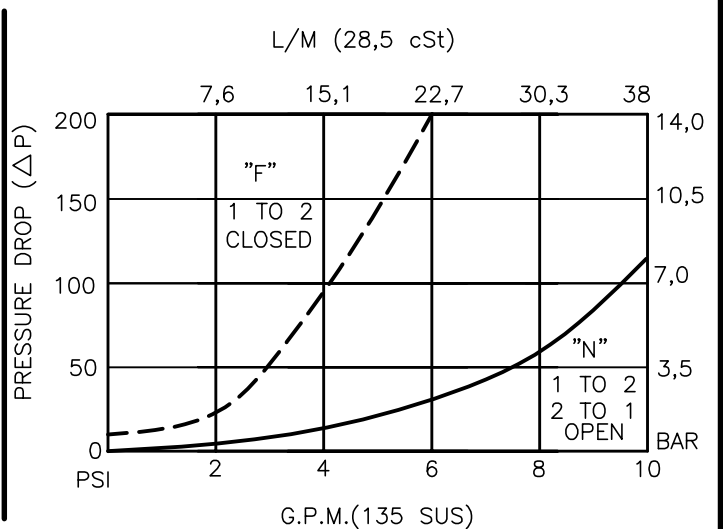
FLOW CONTROL VALVE WITH OR WITHOUT FREE REVERSE FLOW CHECK



FOR ALUMINUM OR STEEL VALVE HOUSING CONFIGURATIONS SEE PAGE 0-011.1



FOR ADJUSTMENT CONTROL OPTIONS SEE PAGE 0-050.0





FLOW CONTROL VALVE WITH OR WITHOUT FREE REVERSE FLOW CHECK

DESCRIPTION

This unit is a SCREW IN, cartridge type, adjustable, poppet type, hydraulic flow control valve with or without free reverse flow check.

OPERATIONS

This valve increases its orifice value from fully closed to fully open with counter-clockwise rotation.

FEATURES AND BENEFITS

Desired settings can be locked down.
Valve adjustment is difficult while subjected to high pressure.
Valve is available with a screw, tamperproof, capped or knob adjustment.
All external carbon steel parts are plated for longer life against the elements.
All cartridge valves are 100% functionally tested.
Industry common cavity.

SPECIFICATIONS

OPERATING PRESSURE: 5,000 PSI [350 Bar]

PROOF PRESSURE: 10,000 PSI [700 Bar]

FLOW: 10.0 GPM [38,0 l/m] nominal. See performance chart.

INTERNAL LEAKAGE: 5 drops per minute maximum @ 5,000 PSI (350 Bar)

VALVE HOUSINGS: 2500 PSI [175 Bar] = Aluminum - Anodized.

5000 PSI [350 Bar] = Steel - Unplated.

OPERATING TEMPERATURE: -40° to +250° F. [-40° to +120° C.]

OPERATING MEDIA: All general purpose hydraulic fluids such as
MIL-H-5606, SAE-#10, SAE-#20, etc.

INSTALLATION: No restrictions.

SEAL KIT: SKN-0822 Buna "N".

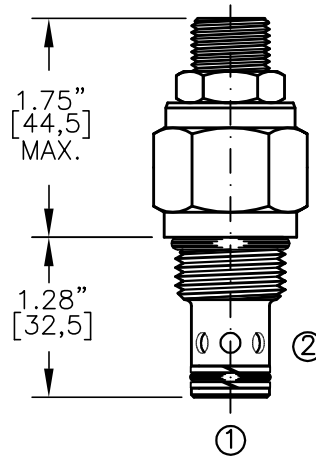
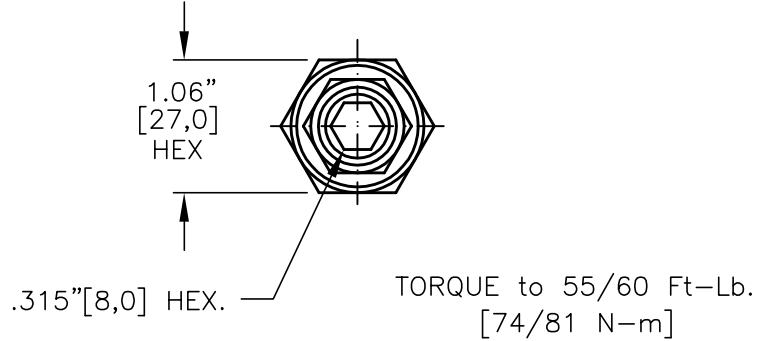
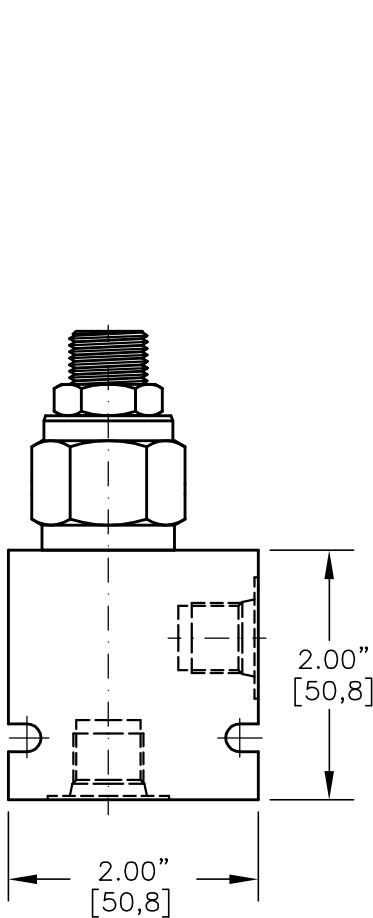
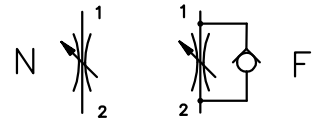
SKV-0822 Viton.

WEIGHT: .30 lb [.14 kg] cartridge only.

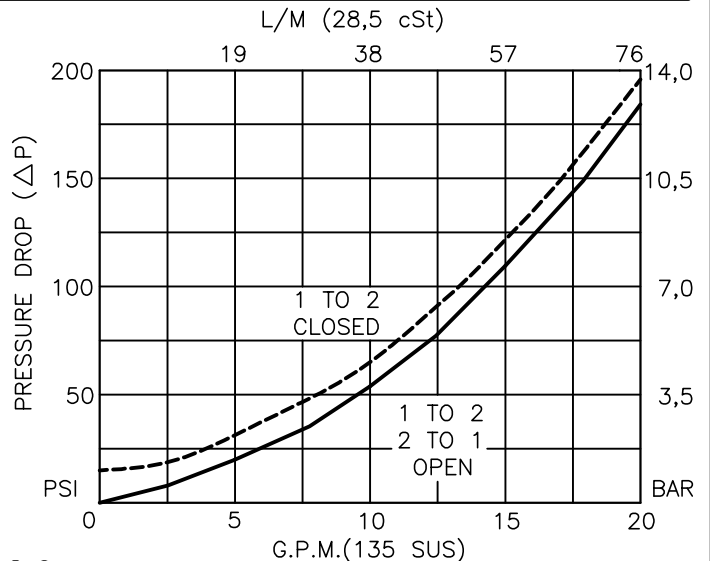
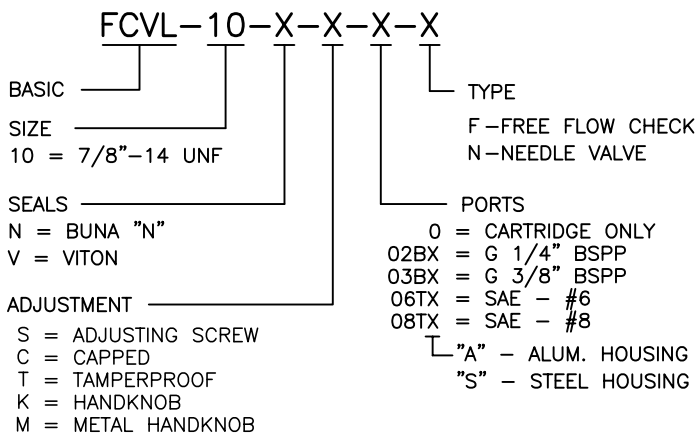
VALVE CAVITY: #C0820, See Page 0-011.0.



FLOW CONTROL VALVE WITH OR WITHOUT FREE REVERSE FLOW CHECK



FOR ALUMINUM OR STEEL VALVE HOUSING CONFIGURATIONS SEE PAGE 0-012.1



FOR ADJUSTMENT CONTROL OPTIONS SEE PAGE 0-050.0



FLOW CONTROL VALVE WITH OR WITHOUT FREE REVERSE FLOW CHECK

DESCRIPTION

This unit is a SCREW IN, cartridge type, adjustable, poppet type, hydraulic flow control valve with or without free reverse flow check.

OPERATIONS

This valve increases its orifice value from fully closed to fully open with counter-clockwise rotation.

FEATURES AND BENEFITS

Desired settings can be locked down.
Valve adjustment is difficult while subjected to high pressure.
Valve is available with a screw, tamperproof, capped or knob adjustment.
All external carbon steel parts are plated for longer life against the elements.
All cartridge valves are 100% functionally tested.
Industry common cavity.

SPECIFICATIONS

OPERATING PRESSURE: 5,000 PSI [350 Bar]

PROOF PRESSURE: 10,000 PSI [700 Bar]

FLOW: 18.0 GPM [68 l/m] nominal. See performance chart.

INTERNAL LEAKAGE: 5 drops per minute maximum @ 5,000 PSI (350 Bar)

VALVE HOUSINGS: 2500 PSI [175 Bar] = Aluminum - Anodized.

5000 PSI [350 Bar] = Steel - Unplated.

OPERATING TEMPERATURE: -40° to +250° F. [-40° to +120° C.]

OPERATING MEDIA: All general purpose hydraulic fluids such as
MIL-H-5606, SAE-#10, SAE-#20, etc.

INSTALLATION: No restrictions.

SEAL KIT: SKN-1022 Buna "N".

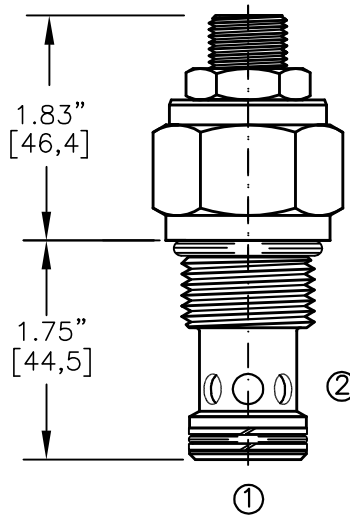
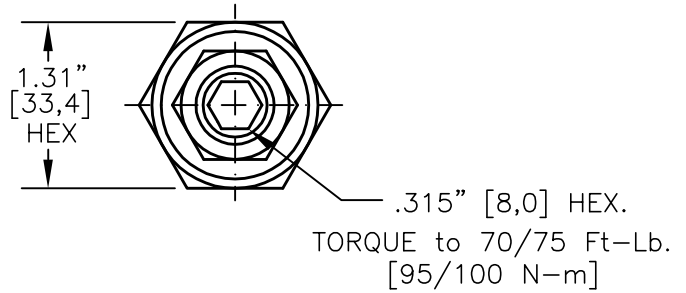
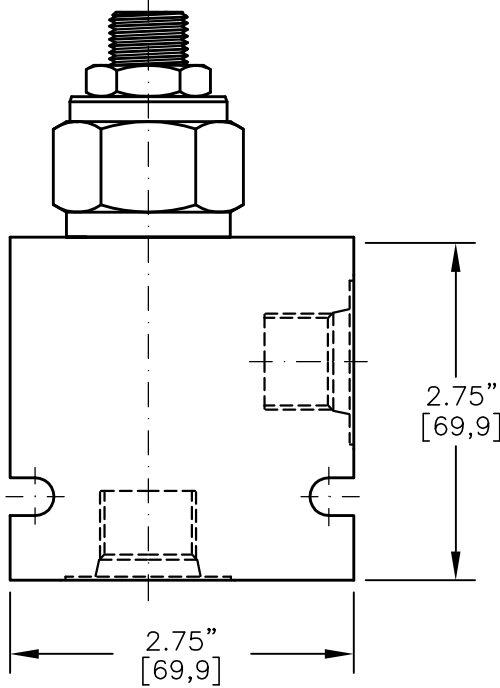
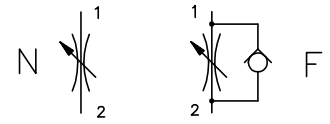
SKV-1022 Viton.

WEIGHT: .38 lb [.17 kg] cartridge only.

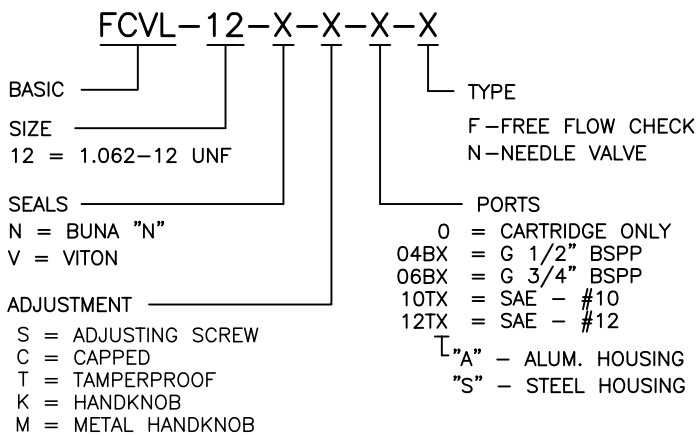
VALVE CAVITY: #C1020, See Page 0-012.0.



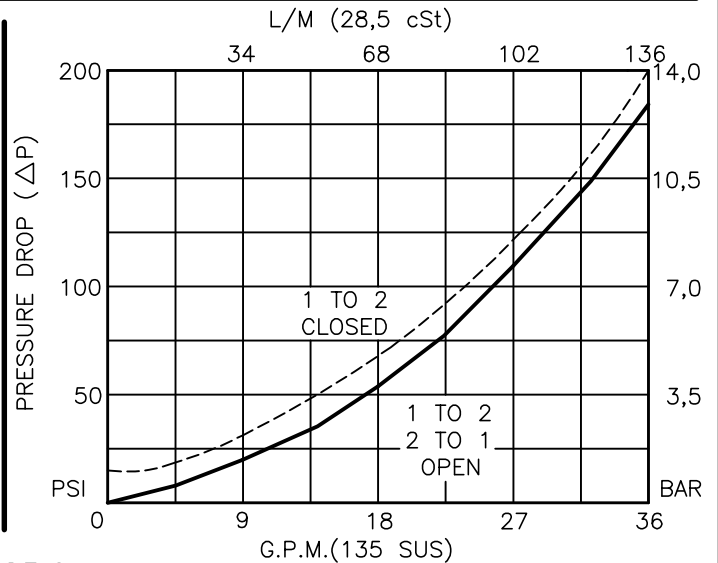
FLOW CONTROL VALVE WITH OR WITHOUT FREE REVERSE FLOW CHECK



FOR ALUMINUM OR STEEL VALVE HOUSING CONFIGURATIONS SEE PAGE 0-013.1



FOR ADJUSTMENT CONTROL OPTIONS SEE PAGE 0-050.0





FLOW CONTROL VALVE WITH OR WITHOUT FREE REVERSE FLOW CHECK

DESCRIPTION

This unit is a SCREW IN, cartridge type, adjustable, poppet type, hydraulic flow control valve with or without free reverse flow check.

OPERATIONS

This valve increases its orifice value from fully closed to fully open with counter-clockwise rotation.

FEATURES AND BENEFITS

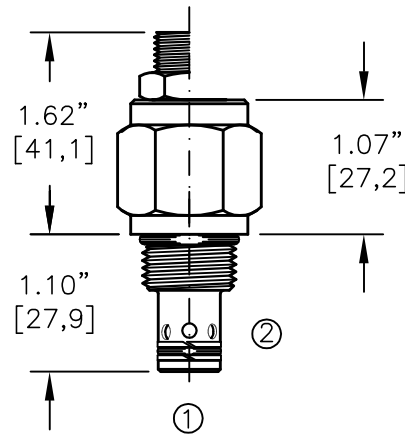
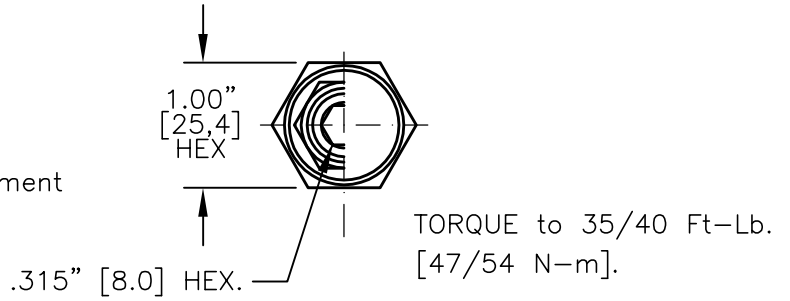
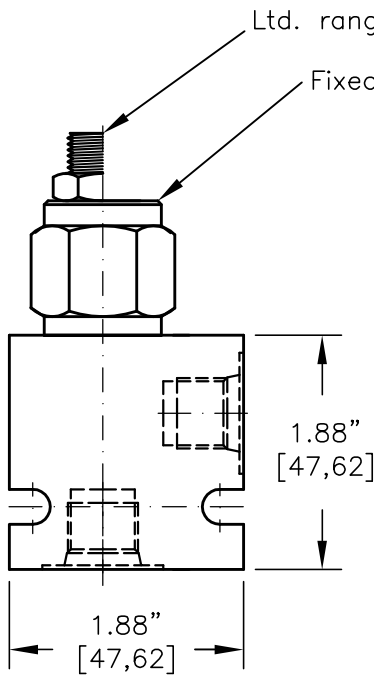
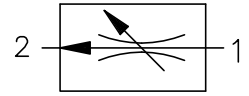
Desired settings can be locked down.
Valve adjustment is difficult while subjected to high pressure.
Valve is available with a screw, tamperproof, capped or knob adjustment.
All external carbon steel parts are plated for longer life against the elements.
All cartridge valves are 100% functionally tested.
Industry common cavity.

SPECIFICATIONS

OPERATING PRESSURE: 5,000 PSI [350 Bar]
PROOF PRESSURE: 10,000 PSI [700 Bar]
FLOW: 36.0 GPM [136 l/m] nominal. See performance chart.
INTERNAL LEAKAGE: 5 drops per minute maximum @ 5,000 PSI (350 Bar)
VALVE HOUSINGS: 2500 PSI [175 Bar] = Aluminum - Anodized.
5000 PSI [350 Bar] = Steel - Unplated.
OPERATING TEMPERATURE: -40° to +250° F. [-40° to +120° C.]
OPERATING MEDIA: All general purpose hydraulic fluids such as
MIL-H-5606, SAE-#10, SAE-#20, etc.
INSTALLATION: No restrictions.
SEAL KIT: SKN-1222 Buna "N".
SKV-1222 Viton.
WEIGHT: .63 lb [.25 kg] cartridge only.
VALVE CAVITY: #C1220, See Page 0-013.0.



FLOW CONTROL VALVE PRESSURE COMPENSATED, FIXED ORIFICE, RESTRICTIVE TYPE

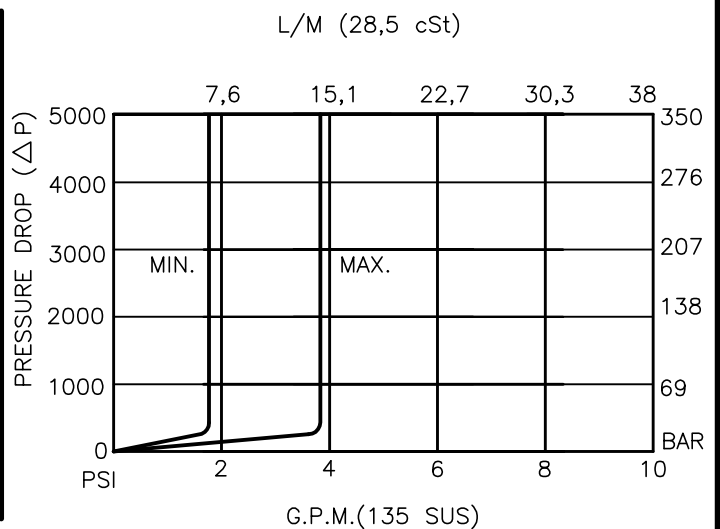


FOR ALUMINUM OR STEEL VALVE HOUSING CONFIGURATIONS SEE PAGE 0-011.1

PCFC-08-X-X-X-XX

- BASIC
- SIZE
08 = 3/4"-16 UNF
- SEALS
N = BUNA "N"
V = VITON
- ADJUSTMENT
F = FIXED (FACTORY SET)
S = ADJUSTING SCREW
C = CAPPED
T = TAMPERPROOF
K = HANDKNOB
M = METAL HANDKNOB
- REGULATED FLOW TO BE SPECIFIED
EXAMPLE
1.5=1.5 GPM (5,7l/m)
- PORTS
0 = CARTRIDGE ONLY
02BX = G 1/4" BSPP
06TX = SAE - #6
- "A" - ALUM. HOUSING
"S" - STEEL HOUSING

FOR ADJUSTMENT CONTROL
OPTIONS SEE PAGE 0-050.0





FLOW CONTROL VALVE PRESSURE COMPENSATED, FIXED ORIFICE, RESTRICTIVE TYPE.

DESCRIPTION – FIXED

This unit is a SCREW IN, cartridge type, pressure compensated, fixed orifice, restrictive hydraulic flow control valve.

FLOW RANGE: 0.2 TO 4.0 GPM [0,8 TO 15,1 L\M]

DESCRIPTION – ADJUSTABLE

This unit is a SCREW IN, cartridge type, pressure compensated, fixed orifice, 50% flow adjustment, restrictive hydraulic flow control valve.

FLOW RANGE: 0.2 TO 6.0 GPM [0,8 TO 22,7 L\M]

Flow adjustment under pressure is difficult.

OPERATIONS

Valve maintains constant flow from port 1 to 2 regardless of system pressure or load and non-compensated flow from port 2 to 1 and goes thru the control orifice.

FEATURES AND BENEFITS

Valve is available with a screw, tamperproof, capped or knob adjustment. All external carbon steel parts are plated for longer life against the elements. All cartridge valves are 100% functionally tested. Industry common cavity.

SPECIFICATIONS

OPERATING PRESSURE: 5,000 PSI (350 Bar)

PROOF PRESSURE: 10,000 PSI (700 Bar)

FLOW: 0.2 to 6.0 GPM [0,8 to 22,7 l/m] nominal. See performance chart.

FLOW ACCURACY:

0.2 to 1.5 GPM [0,9 to 6,0 L\M] = +\ - 10.0%

1.5 to 6.0 GPM [6,0 to 22,7 L\M] = +\ - 7.5%

VALVE HOUSINGS: 2500 PSI [175 Bar] = Aluminum – Anodized.

5000 PSI [350 Bar] = Steel – Unplated.

OPERATING TEMPERATURE: -40° to +250° F. [-40° to +120° C.]

OPERATING MEDIA: All general purpose hydraulic fluids such as MIL-H-5606, SAE-#10, SAE-#20, etc.

INSTALLATION: No restrictions.

SEAL KIT: SKN-0822 Buna "N".

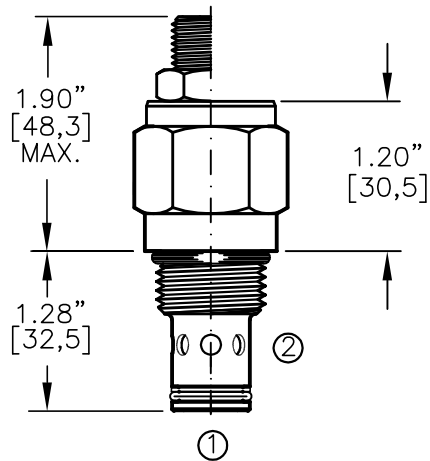
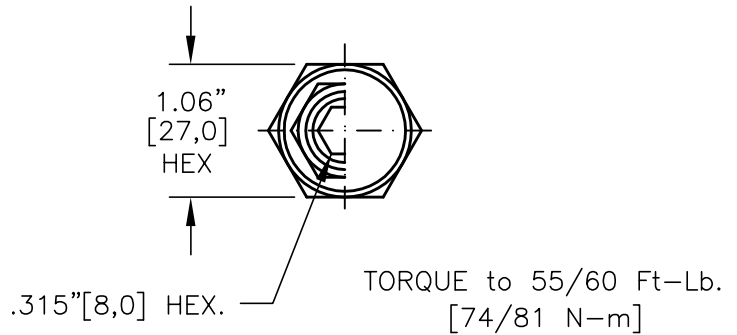
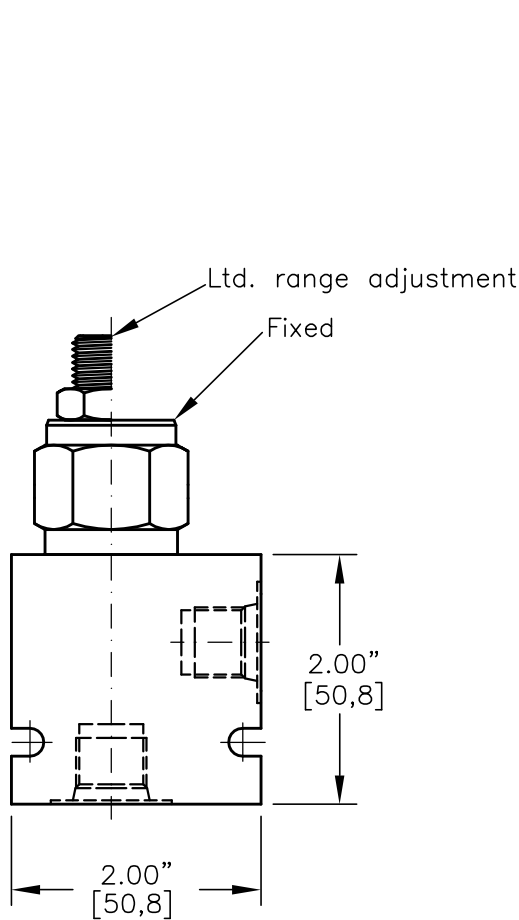
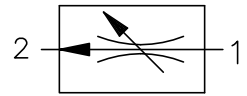
SKV-0822 Viton.

WEIGHT: .26 lb [.12 kg] cartridge only.

VALVE CAVITY: #C0820, See Page 0-011.0.



FLOW CONTROL VALVE PRESSURE COMPENSATED, FIXED ORIFICE, RESTRICTIVE TYPE.



FOR ALUMINUM OR STEEL VALVE HOUSING CONFIGURATIONS SEE PAGE 0-012.1

PCFC-10-X-X-X-XX

BASIC

SIZE

10 = 7/8"-14 UNF

SEALS

N = BUNA "N"

V = VITON

ADJUSTMENT

F = FIXED (FACTORY SET)

S = ADJUSTING SCREW

C = CAPPED

T = TAMPERPROOF

K = HANDKNOB

M = METAL HANDKNOB

REGULATED FLOW

TO BE SPECIFIED

EXAMPLE

1.5=1.5 GPM (5,7l/m)

PORTS

0 = CARTRIDGE ONLY

02BX = G 1/4" BSPP

03BX = G 3/8" BSPP

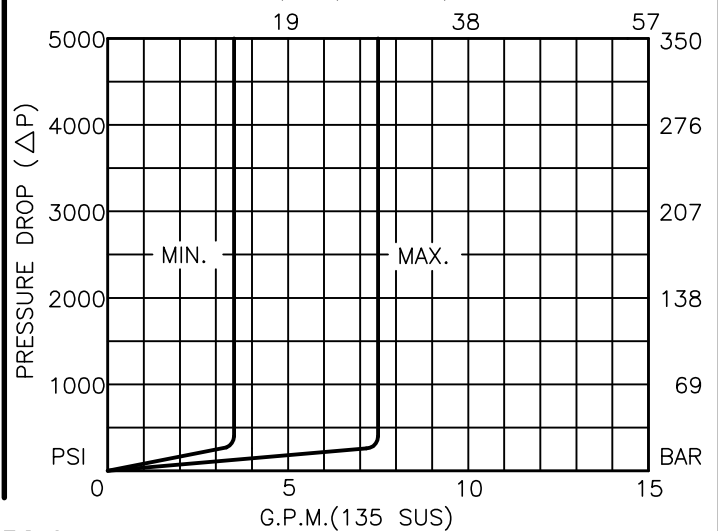
06TX = SAE - #6

08TX = SAE - #8

"A" - ALUM. HOUSING

"S" - STEEL HOUSING

L/M (28,5 cSt)



FOR ADJUSTMENT CONTROL OPTIONS SEE PAGE 0-050.0



**FLOW CONTROL VALVE PRESSURE COMPENSATED,
FIXED ORIFICE, RESTRICTIVE TYPE.**

DESCRIPTION – FIXED

This unit is a SCREW IN, cartridge type, pressure compensated, fixed orifice, restrictive hydraulic flow control valve.

FLOW RANGE: 0.2 TO 8.0 GPM [0,8 TO 30,0 L\M]

DESCRIPTION – ADJUSTABLE

This unit is a SCREW IN, cartridge type, pressure compensated, fixed orifice, 50% flow adjustment, restrictive hydraulic flow control valve.

FLOW RANGE: 0.2 TO 12.0 GPM [0,8 TO 45,0 L\M]

Flow adjustment under pressure is difficult.

OPERATIONS

Valve maintains constant flow from port 1 to 2 regardless of system pressure or load and non-compensated flow from port 2 to 1 and goes thru the control orifice.

FEATURES AND BENEFITS

Valve is available with a screw, tamperproof, capped or knob adjustment. All external carbon steel parts are plated for longer life against the elements. All cartridge valves are 100% functionally tested. Industry common cavity.

SPECIFICATIONS

OPERATING PRESSURE: 5,000 PSI (350 Bar)

PROOF PRESSURE: 10,000 PSI (700 Bar)

FLOW: 0.2 to 12.0 GPM [0,8 to 45,0 l/m] nominal. See performance chart.

FLOW ACCURACY:

0.2 to 1.5 GPM [0,9 to 6,0 L\M] = +\ - 10.0%

1.5 to 4.0 GPM [6,0 to 15,0 L\M] = +\ - 7.5%

4.0 to 12.0 GPM [15,0 to 45,0 L\M] = +\ - 5.0%

VALVE HOUSINGS: 2500 PSI [175 Bar] = Aluminum - Anodized.

5000 PSI [350 Bar] = Steel - Unplated.

OPERATING TEMPERATURE: -40° to +250° F. [-40° to +120° C.]

OPERATING MEDIA: All general purpose hydraulic fluids such as MIL-H-5606, SAE-#10, SAE-#20, etc.

INSTALLATION: No restrictions.

SEAL KIT: SKN-1021 Buna "N".

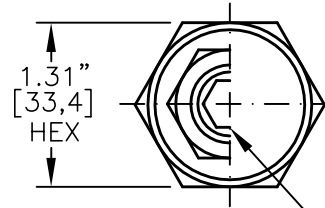
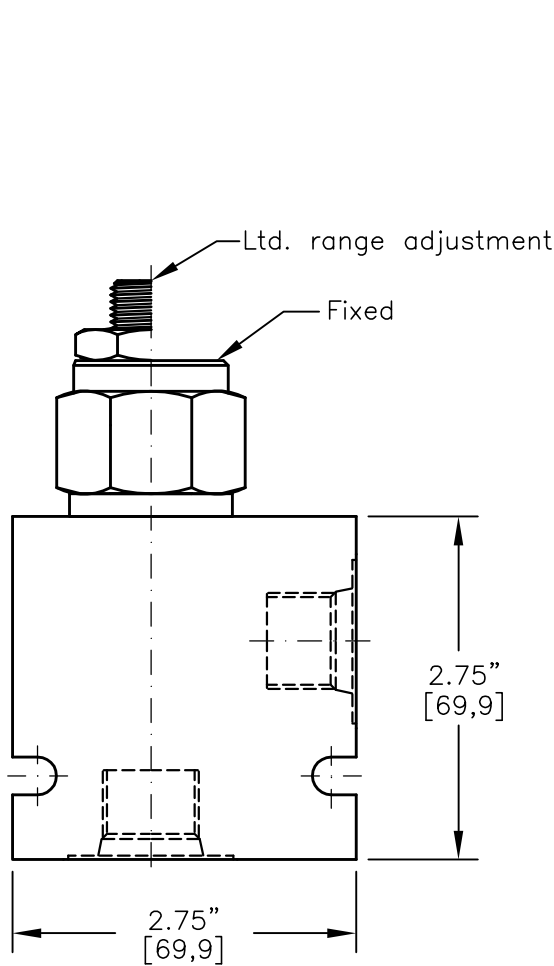
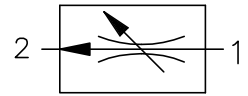
SKV-1021 Viton.

WEIGHT: .38 lb [.17 kg] cartridge only.

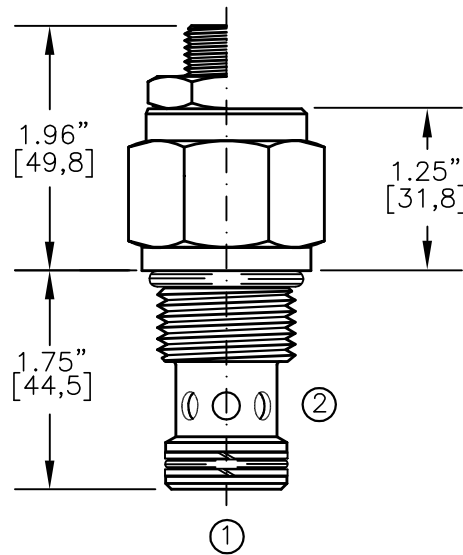
VALVE CAVITY: #C1020, See Page 0-012.0.



FLOW CONTROL VALVE PRESSURE COMPENSATED, FIXED ORIFICE, RESTRICTIVE TYPE.



.315" [8,0] HEX. TORQUE to 70/75 Ft-Lb. [95/100 N-m]



FOR ALUMINUM OR STEEL VALVE HOUSING CONFIGURATIONS SEE PAGE 0-013.1

PCFC-12-X-X-X-XX

BASIC

SIZE

12 = 1.062"-12UNF

SEALS

N = BUNA "N"

V = VITON

ADJUSTMENT

F = FIXED (FACTORY SET)

S = ADJUSTING SCREW

C = CAPPED

T = TAMPERPROOF

REGULATED FLOW TO BE SPECIFIED

EXAMPLE

1.5=1.5 GPM (5,7l/m)

PORTS

0 = CARTRIDGE ONLY

04BX = G 1/2" BSPP

06BX = G 3/4" BSPP

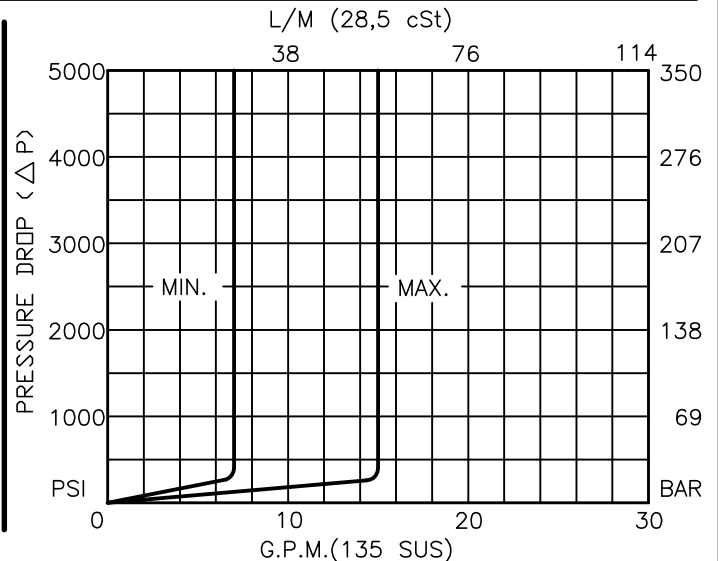
10TX = SAE - #10

12TX = SAE - #12

"A" - ALUM. HOUSING

"S" - STEEL HOUSING

FOR ADJUSTMENT CONTROL OPTIONS SEE PAGE 0-050.0





FLOW CONTROL VALVE PRESSURE COMPENSATED, FIXED ORIFICE, RESTRICTIVE TYPE.

DESCRIPTION – FIXED

This unit is a SCREW IN, cartridge type, pressure compensated, fixed orifice, restrictive hydraulic flow control valve.

FLOW RANGE: 0.2 TO 16.0 GPM [0,8 TO 60,0 L\M]

DESCRIPTION – ADJUSTABLE

This unit is a SCREW IN, cartridge type, pressure compensated, fixed orifice, 50% flow adjustment, restrictive hydraulic flow control valve.

FLOW RANGE: 0.2 TO 24.0 GPM [0,8 TO 90,0 L\M]

Flow adjustment under pressure is difficult.

OPERATIONS

Valve maintains constant flow from port 1 to 2 regardless of system pressure or load and non-compensated flow from port 2 to 1 and goes thru the control orifice.

FEATURES AND BENEFITS

Valve is available with a screw, tamperproof, capped or knob adjustment. All external carbon steel parts are plated for longer life against the elements. All cartridge valves are 100% functionally tested. Industry common cavity.

SPECIFICATIONS

OPERATING PRESSURE: 5,000 PSI (350 Bar)

PROOF PRESSURE: 10,000 PSI (700 Bar)

FLOW: 0.2 to 24.0 GPM [0,8 to 90,0 l/m] nominal. See performance chart.

FLOW ACCURACY:

0.2 to 3.0 GPM [0,9 to 12,0 L\M] = +\ - 10.0%

3.0 to 8.0 GPM [12,0 to 30,0 L\M] = +\ - 7.5%

8.0 to 24.0 GPM [30,0 to 90,0 L\M] = +\ - 5.0%

VALVE HOUSINGS: 2500 PSI [175 Bar] = Aluminum - Anodized.

5000 PSI [350 Bar] = Steel - Unplated.

OPERATING TEMPERATURE: -40° to +250° F. [-40° to +120° C.]

OPERATING MEDIA: All general purpose hydraulic fluids such as MIL-H-5606, SAE-#10, SAE-#20, etc.

INSTALLATION: No restrictions.

SEAL KIT: SKN-1222 Buna "N".

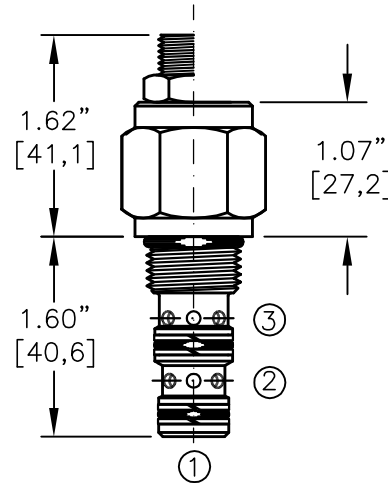
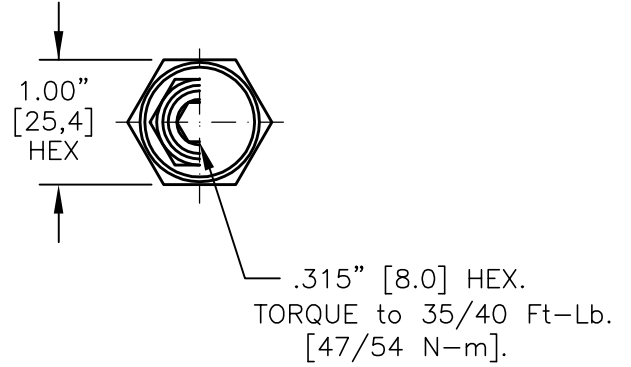
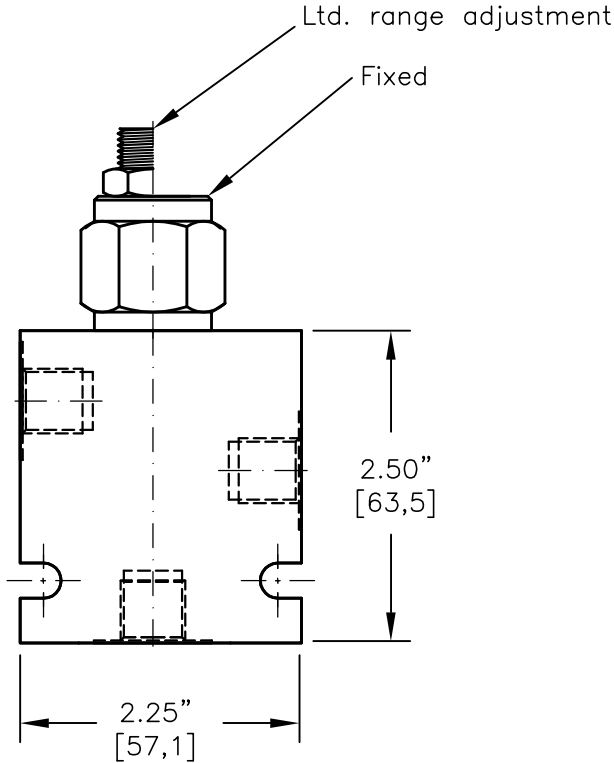
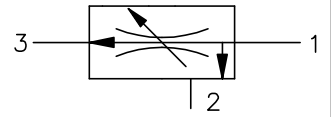
SKV-1222 Viton.

WEIGHT: .38 lb [.17 kg] cartridge only.

VALVE CAVITY: #C1220, See Page 0-013.0.



FLOW CONTROL VALVE PRESSURE COMPENSATED, FIXED ORIFICE, PRIORITY TYPE.



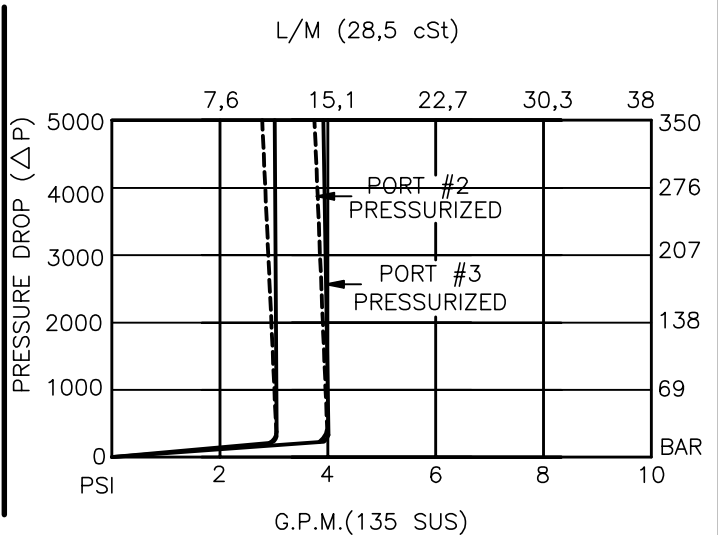
FOR ALUMINUM OR STEEL VALVE HOUSING CONFIGURATIONS SEE PAGE 0-031.1

BFCV-08-X-X-X-XX

- BASIC _____
- SIZE _____
08 = 3/4"-16 UNF
- SEALS _____
N = BUNA "N"
V = VITON
- ADJUSTMENT _____
F = FIXED (FACTORY SET)
S = ADJUSTING SCREW
C = CAPPED
T = TAMPERPROOF
K = HANDKNOB
M = METAL HANDKNOB

- REGULATED FLOW TO BE SPECIFIED
EXAMPLE
1.5=1.5 GPM (5,7l/m)
- PORTS
0 = CARTRIDGE ONLY
02BX = G 1/4" BSPP
06TX = SAE - #6
"A" - ALUM. HOUSING
"S" - STEEL HOUSING

FOR ADJUSTMENT CONTROL OPTIONS SEE PAGE 0-050.0





FLOW CONTROL VALVE PRESSURE COMPENSATED, FIXED ORIFICE, PRIORITY TYPE.

DESCRIPTION – FIXED

This unit is a SCREW IN, cartridge type, pressure compensated, fixed orifice, priority type hydraulic flow control valve.

FLOW RANGE: 0.2 TO 4.0 GPM [0,8 TO 15,1 L\M]

DESCRIPTION – ADJUSTABLE

This unit is a SCREW IN, cartridge type, pressure compensated, fixed orifice, 50% flow adjustment, priority type hydraulic flow control valve.

FLOW RANGE: 0.2 TO 6.0 GPM [0,8 TO 22,7 L\M]

Flow adjustment under pressure is difficult.

OPERATIONS

Valve maintains constant flow from port 1 to 3 regardless of system pressure or load and excess flow is diverted to port 2. Flow from port 3 goes thru the control orifice to port 1 at non-compensated flow.

FEATURES AND BENEFITS

Valve is available with a screw, tamperproof, capped or knob adjustment. All external carbon steel parts are plated for longer life against the elements. All cartridge valves are 100% functionally tested. Industry common cavity.

SPECIFICATIONS

OPERATING PRESSURE: 5,000 PSI (350 Bar)

PROOF PRESSURE: 10,000 PSI (700 Bar)

FLOW: 0.2 to 6.0 GPM [0,8 to 22,7 l/m] nominal. See performance chart.

FLOW ACCURACY:

0.2 to 1.5 GPM [0,9 to 6,0 L\M] = +\ - 10.0%

1.5 to 6.0 GPM [6,0 to 22,7 L\M] = +\ - 7.5%

VALVE HOUSINGS: 2500 PSI [175 Bar] = Aluminum – Anodized.

5000 PSI [350 Bar] = Steel – Unplated.

OPERATING TEMPERATURE: -40° to +250° F. [-40° to +120° C.]

OPERATING MEDIA: All general purpose hydraulic fluids such as MIL-H-5606, SAE-#10, SAE-#20, etc.

INSTALLATION: No restrictions.

SEAL KIT: SKN-0830 Buna "N".

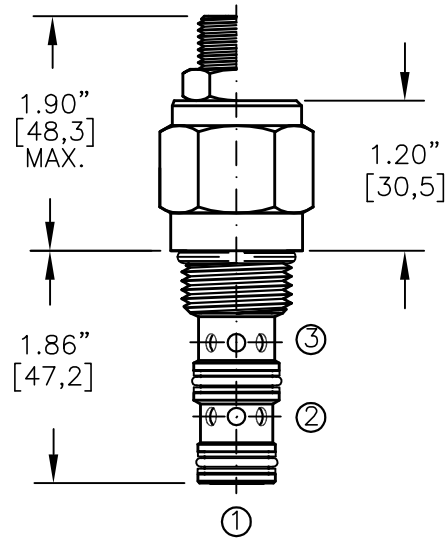
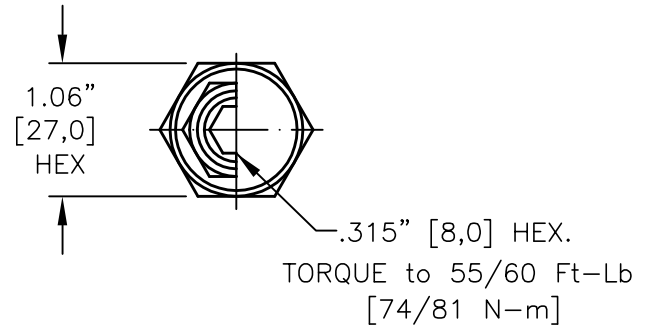
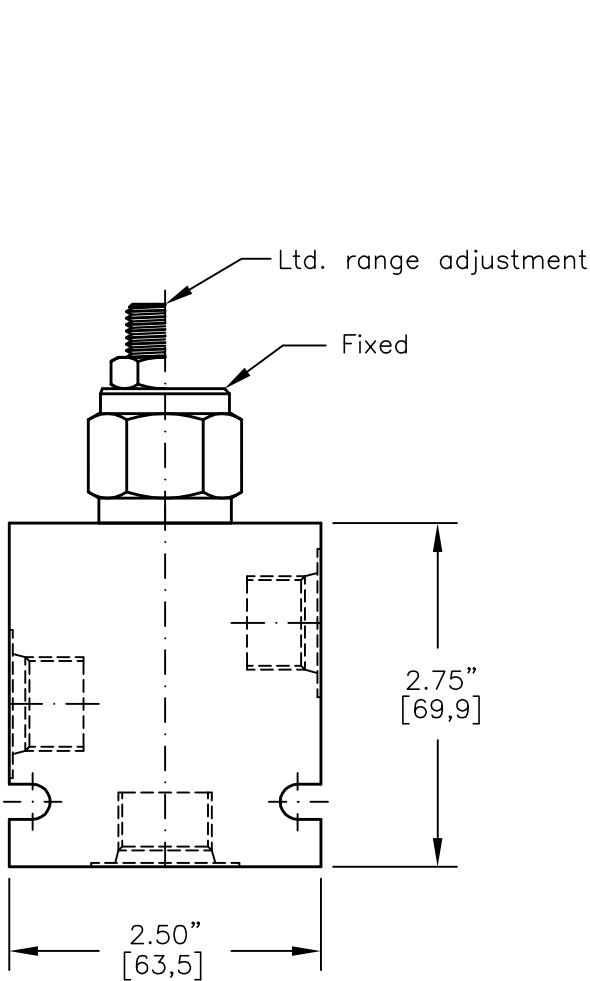
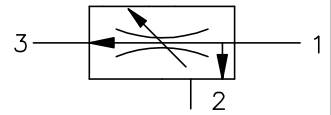
SKV-0830 Viton.

WEIGHT: .28 lb [.13 kg] cartridge only.

VALVE CAVITY: #C0830, See Page 0-031.0.



FLOW CONTROL VALVE PRESSURE COMPENSATED, FIXED ORIFICE, PRIORITY TYPE.



FOR ALUMINUM OR STEEL VALVE HOUSING CONFIGURATIONS SEE PAGE 0-032.1

BFCV-10-X-X-X-XX

BASIC

SIZE
10 = 7/8"-14 UNF

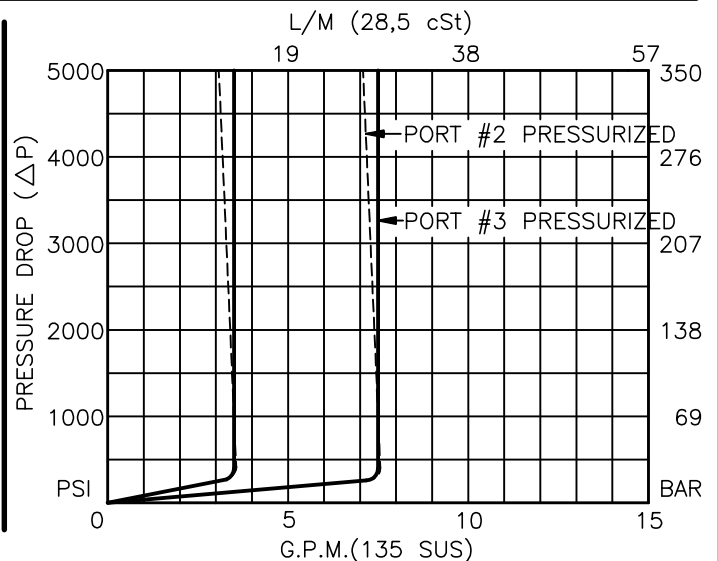
SEALS
N = BUNA "N"
V = VITON

ADJUSTMENT
F = FIXED (FACTORY SET)
S = ADJUSTING SCREW
C = CAPPED
T = TAMPERPROOF
K = HANDKNOB
M = METAL HANDKNOB

FOR ADJUSTMENT CONTROL
OPTIONS SEE PAGE 0-050.0

REGULATED FLOW
TO BE SPECIFIED
EXAMPLE
1.5=1.5 GPM (5,7l/m)

PORTS
0 = CARTRIDGE ONLY
02BX = G 1/4" BSPP
03BX = G 3/8" BSPP
06TX = SAE - #6
08TX = SAE - #8
"A" - ALUM. HOUSING
"S" - STEEL HOUSING





FLOW CONTROL VALVE PRESSURE COMPENSATED, FIXED ORIFICE, PRIORITY TYPE.

DESCRIPTION – FIXED

This unit is a SCREW IN, cartridge type, pressure compensated, fixed orifice, priority type hydraulic flow control valve.

FLOW RANGE: 0.2 TO 8.0 GPM [0,8 TO 30,0 L\M]

DESCRIPTION – ADJUSTABLE

This unit is a SCREW IN, cartridge type, pressure compensated, fixed orifice, 50% flow adjustment, priority type hydraulic flow control valve.

FLOW RANGE: 0.2 TO 12.0 GPM [0,8 TO 45,0 L\M]

Flow adjustment under pressure is difficult.

OPERATIONS

Valve maintains constant flow from port 1 to 3 regardless of system pressure or load and excess flow is diverted to port 2. Flow from port 3 goes thru the control orifice to port 1 at non-compensated flow.

FEATURES AND BENEFITS

Valve is available with a screw, tamperproof, capped or knob adjustment. All external carbon steel parts are plated for longer life against the elements. All cartridge valves are 100% functionally tested. Industry common cavity.

SPECIFICATIONS

OPERATING PRESSURE: 5,000 PSI (350 Bar)

PROOF PRESSURE: 10,000 PSI (700 Bar)

FLOW: 0.2 to 12.0 GPM [0,8 to 45,0 l/m] nominal. See performance chart.

FLOW ACCURACY:

0.2 to 1.5 GPM [0,9 to 6,0 L\M] = +\ - 10.0%

1.5 to 4.0 GPM [6,0 to 15,0 L\M] = +\ - 7.5%

4.0 to 12.0 GPM [15,0 to 45,0 L\M] = =\ - 5.0%

VALVE HOUSINGS: 2500 PSI [175 Bar] = Aluminum - Anodized.

5000 PSI [350 Bar] = Steel - Unplated.

OPERATING TEMPERATURE: -40° to +250° F. [-40° to +120° C.]

OPERATING MEDIA: All general purpose hydraulic fluids such as MIL-H-5606, SAE-#10, SAE-#20, etc.

INSTALLATION: No restrictions.

SEAL KIT: SKN-1030 Buna "N".

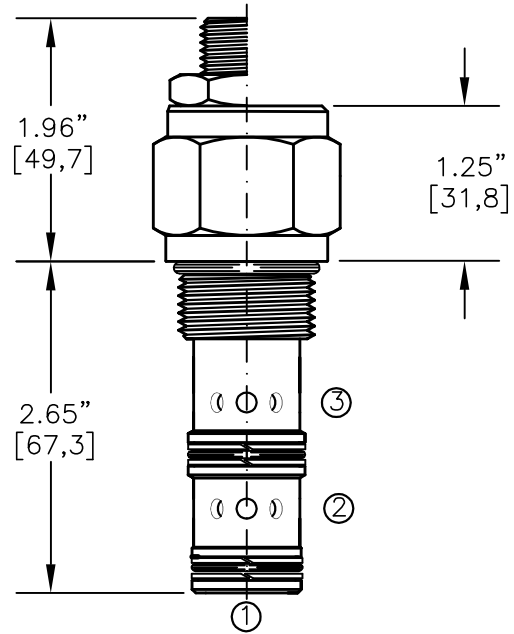
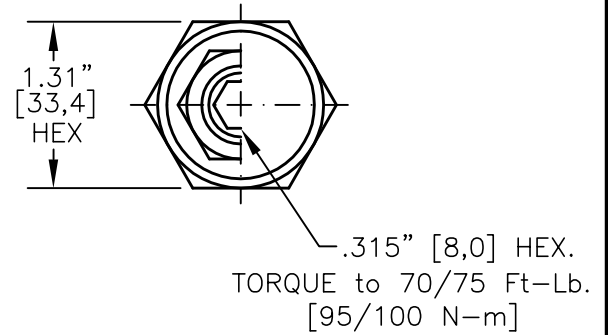
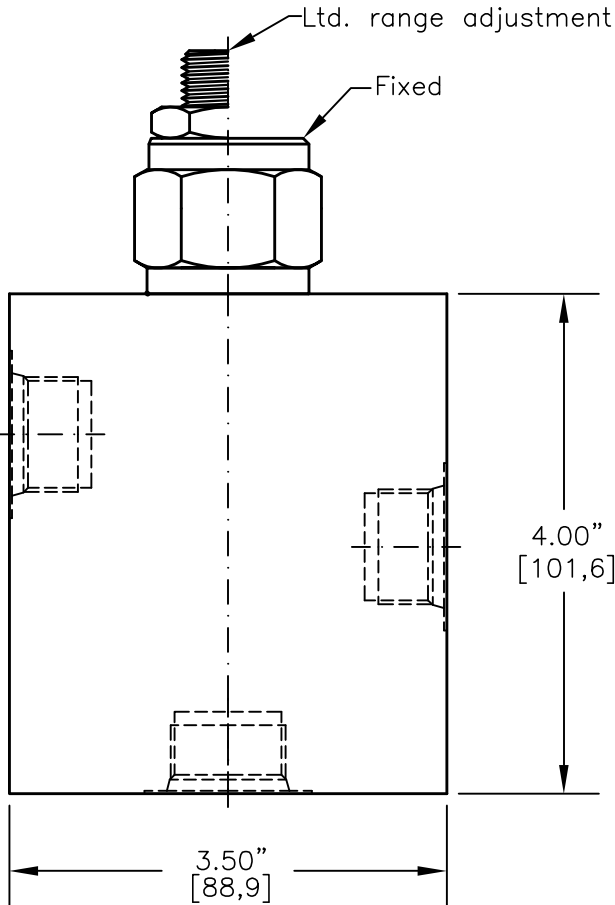
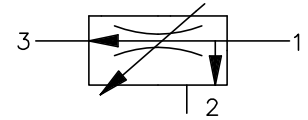
SKV-1030 Viton.

WEIGHT: .42 lb [.19 kg] cartridge only.

VALVE CAVITY: #C1030, See Page 0-032.0.



FLOW CONTROL VALVE PRESSURE COMPENSATED, FIXED ORIFICE, PRIORITY TYPE.



FOR ALUMINUM OR STEEL VALVE HOUSING CONFIGURATIONS SEE PAGE 0-033.1

BFCV-12-X-X-X-XX

BASIC

SIZE

12 = 1.062"-12 UNF

SEALS

N = BUNA "N"

V = VITON

ADJUSTMENT

F = FIXED (FACTORY SET)

S = ADJUSTING SCREW

C = CAPPED

T = TAMPERPROOF

REGULATED FLOW TO BE SPECIFIED
EXAMPLE

1.5=1.5 GPM (5,7l/m)

PORTS

0 = CARTRIDGE ONLY

04BX = G 1/2" BSPP

06BX = G 3/4" BSPP

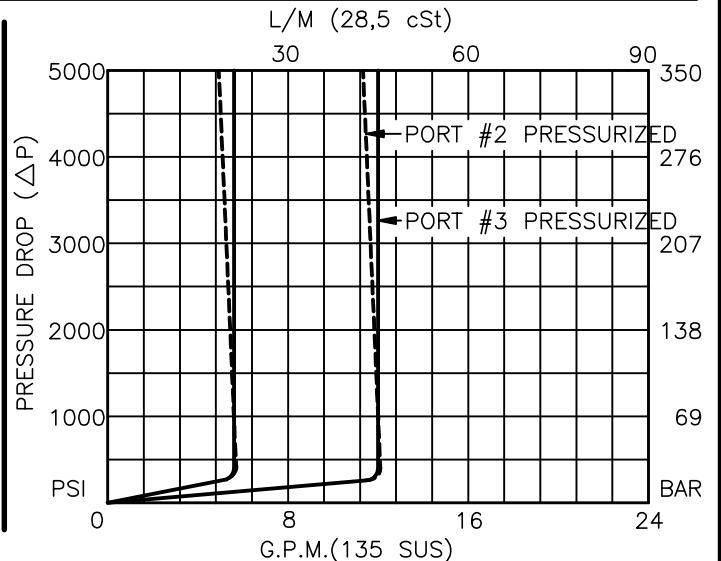
10TX = SAE - #10

12TX = SAE - #12

"A" - ALUM. HOUSING

"S" - STEEL HOUSING

FOR ADJUSTMENT CONTROL
OPTIONS SEE PAGE 0-050.0





**FLOW CONTROL VALVE PRESSURE COMPENSATED,
FIXED ORIFICE, PRIORITY TYPE.**

DESCRIPTION – FIXED

This unit is a SCREW IN, cartridge type, pressure compensated, fixed orifice, priority type hydraulic flow control valve.

FLOW RANGE: 0.5 TO 16.0 GPM [1,8 TO 60,0 L\M]

DESCRIPTION – ADJUSTABLE

This unit is a SCREW IN, cartridge type, pressure compensated, fixed orifice, 50% flow adjustment, priority type hydraulic flow control valve.

FLOW RANGE: 0.5 TO 20.0 GPM [1,8 TO 76,0 L\M]

Flow adjustment under pressure is difficult.

OPERATIONS

Valve maintains constant flow from port 1 to 3 regardless of system pressure or load and excess flow is diverted to port 2. Flow from port 3 goes thru the control orifice to port 1 at non-compensated flow.

FEATURES AND BENEFITS

Valve is available with a screw, tamperproof or capped adjustment. All external carbon steel parts are plated for longer life against the elements. All cartridge valves are 100% functionally tested. Industry common cavity.

SPECIFICATIONS

OPERATING PRESSURE: 5,000 PSI (350 Bar)

PROOF PRESSURE: 10,000 PSI (700 Bar)

FLOW: 0.5 to 20.0 GPM [1,8 to 76,0 l/m] nominal. See performance chart.

FLOW ACCURACY:

0.5 to 4.0 GPM [1,8 to 15,0 L\M] = +\ - 10.0%

4.0 to 12.0 GPM [15,0 to 46,0 L\M] = +\ - 7.5%

12.0 to 20.0 GPM [46,0 to 76,0 L\M] = =\ - 5.0%

VALVE HOUSINGS: 2500 PSI [175 Bar] = Aluminum - Anodized.

5000 PSI [350 Bar] = Steel - Unplated.

OPERATING TEMPERATURE: -40° to +250° F. [-40° to +120° C.]

OPERATING MEDIA: All general purpose hydraulic fluids such as MIL-H-5606, SAE-#10, SAE-#20, etc.

INSTALLATION: No restrictions.

SEAL KIT: SKN-1232 Buna "N".

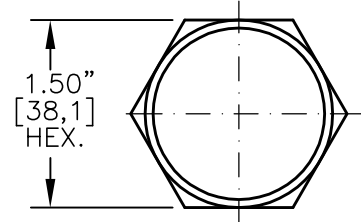
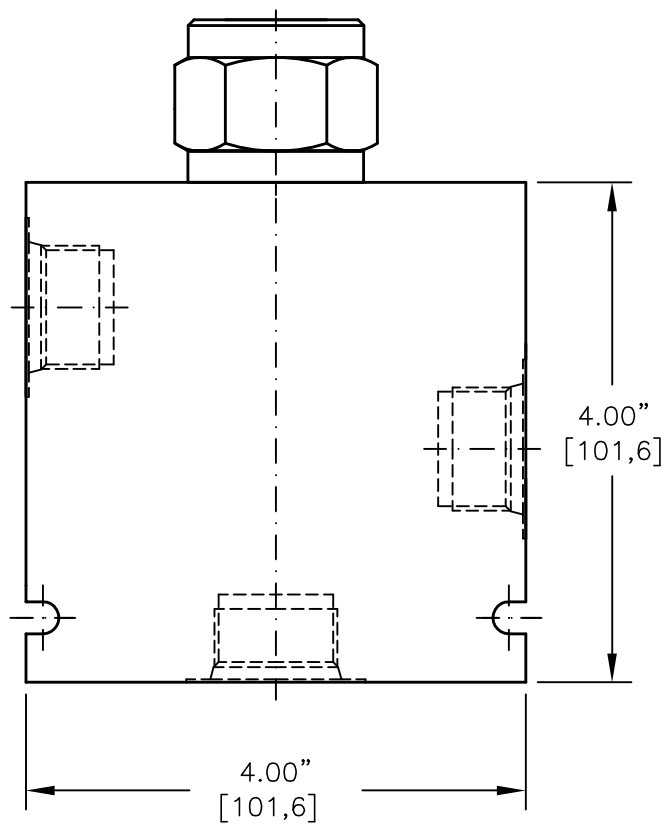
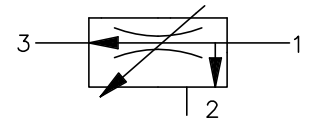
SKV-1232 Viton.

WEIGHT: .72 lb [,34 kg] cartridge only.

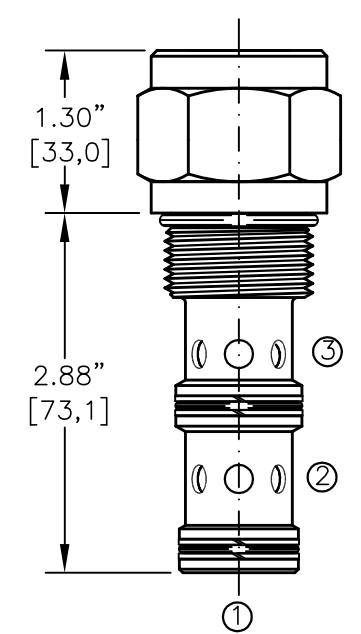
VALVE CAVITY: #C1230, See Page 0-033.0.



FLOW CONTROL VALVE PRESSURE COMPENSATED, FIXED ORIFICE, PRIORITY TYPE.



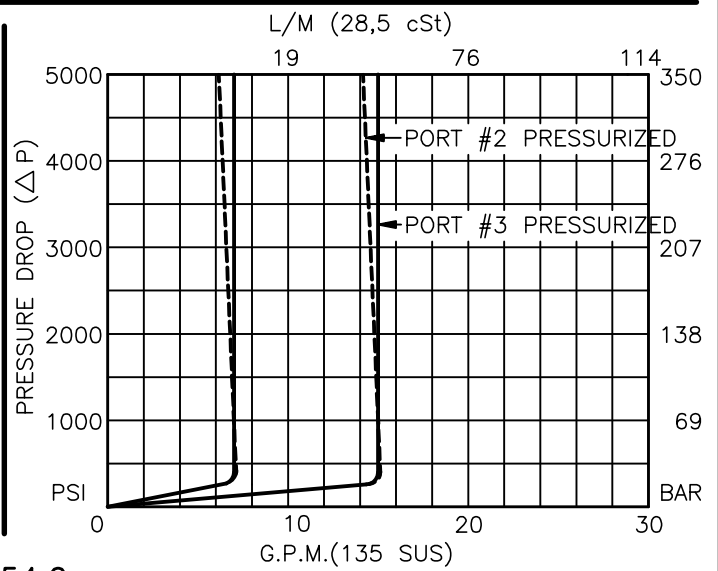
TORQUE to 95/100 Ft-Lb. [127/135 N-m]



FOR ALUMINUM OR STEEL VALVE HOUSING CONFIGURATIONS SEE PAGE 0-034.1

BFCV-16-X-F-X-XX

- BASIC _____
- SIZE _____
16 = 1.312"-12 UNF
- SEALS _____
N = BUNA "N"
V = VITON
- ADJUSTMENT _____
F = FIXED (FACTORY SET)
- REGULATED FLOW TO BE SPECIFIED
EXAMPLE
1.5=1.5 GPM (5,7l/m)
- PORTS _____
0 = CARTRIDGE ONLY
06BX = G 3/4" BSPP
08BX = G 1" BSPP
12TX = SAE - #12
16TX = SAE - #16
- "A" - ALUM. HOUSING
"S" - STEEL HOUSING





FLOW CONTROL VALVE PRESSURE COMPENSATED, FIXED ORIFICE, PRIORITY TYPE.

DESCRIPTION – FIXED

This unit is a SCREW IN, cartridge type, pressure compensated, fixed orifice, priority type hydraulic flow control valve.

FLOW RANGE: 0.5 TO 30.0 GPM [1,8 TO 114,0 L\M]

OPERATIONS

Valve maintains constant flow from port 1 to 3 regardless of system pressure or load and excess flow is diverted to port 2. Flow from port 3 goes thru the control orifice to port 1 at non-compensated flow.

FEATURES AND BENEFITS

Valve is available with a fixed flow setting only.
All external carbon steel parts are plated for longer life against the elements.
All cartridge valves are 100% functionally tested.
Externally removable flow orifice disc.
Industry common cavity.

SPECIFICATIONS

OPERATING PRESSURE: 5,000 PSI (350 Bar)

PROOF PRESSURE: 10,000 PSI (700 Bar)

FLOW: 0.5 to 30.0 GPM [1,8 to 114,0 l/m] nominal. See performance chart.

FLOW ACCURACY:

0.5 to 4.0 GPM [1,8 to 15,0 L\M] = +\ - 10.0%

4.0 to 16.0 GPM [15,0 to 60,0 L\M] = +\ - 7.5%

16.0 to 30.0 GPM [60,0 to 114,0 L\M] = =\ - 5.0%

VALVE HOUSINGS: 2500 PSI [175 Bar] = Aluminum - Anodized.

5000 PSI [350 Bar] = Steel - Unplated.

OPERATING TEMPERATURE: -40° to +250° F. [-40° to +120° C.]

OPERATING MEDIA: All general purpose hydraulic fluids such as
MIL-H-5606, SAE-#10, SAE-#20, etc.

INSTALLATION: No restrictions.

SEAL KIT: SKN-1632 Buna "N".

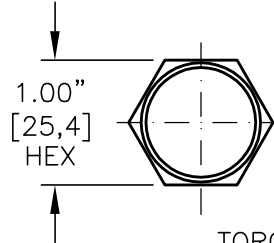
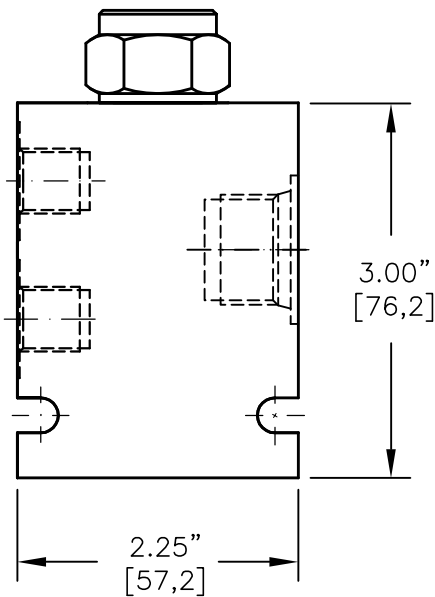
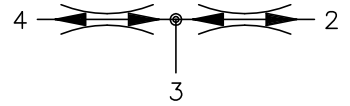
SKV-1632 Viton.

WEIGHT: 1.40 lb [.64 kg] cartridge only.

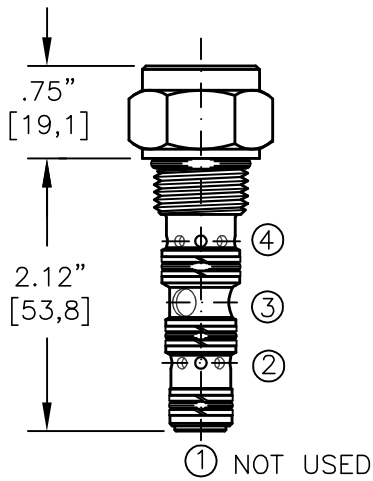
VALVE CAVITY: #C1630, See Page 0-034.0.



FLOW DIVIDER/COMBINER VALVE, SPOOL TYPE



TORQUE to 35/40 Ft-Lb. [47/54 N-m].

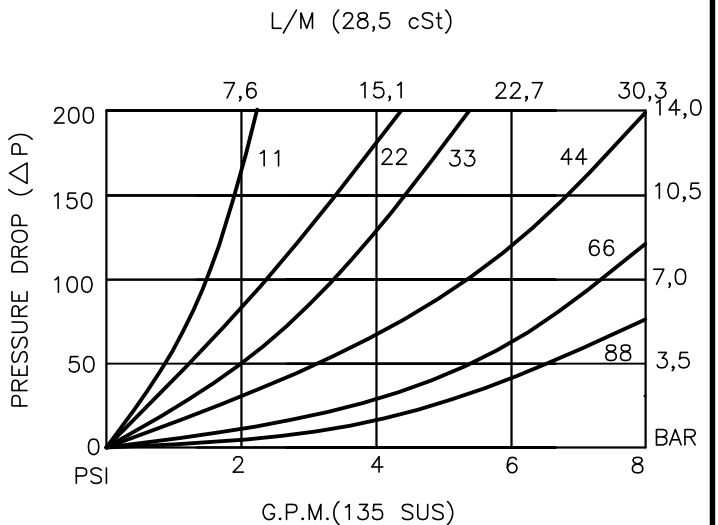


PORT #3 (INLET) IS ONE SIZE LARGER THAN PORTS #2 & #4 (OUTLET).
FOR ALUMINUM OR STEEL VALVE HOUSING CONFIGURATIONS SEE PAGE 0-041.2

FDCV-08-X-X-XX

- BASIC
- SIZE
- 08 = 3/4"-16 UNF
- SEALS
- N = BUNA "N"
- V = VITON
- PORT #3
- 0 = CARTRIDGE ONLY
- 03BX = G 3/8" BSPP
- 08TX = SAE - #8
- "A" - ALUM. HOUSING
- "S" - STEEL HOUSING

CODE	PORT#2	PORT#4	MAX FLOW
11	50%	50%	1.0 GPM
22	50%	50%	2.0 GPM
33	50%	50%	3.0 GPM
44	50%	50%	4.0 GPM
66	50%	50%	6.0 GPM
88	50%	50%	8.0 GPM
12	33.3%	66.6%	1.5 GPM
13	25%	75%	2.0 GPM
24	33.3%	66.6%	3.0 GPM
26	25%	75%	4.0 GPM
36	33.3%	66.6%	4.5 GPM
48	33.3%	66.6%	6.0 GPM
21	66.6%	33.3%	1.5 GPM
31	75%	25%	2.0 GPM
42	66.6%	33.3%	3.0 GPM
62	75%	25%	4.0 GPM
63	66.6%	33.3%	4.5 GPM
84	66.6%	33.3%	6.0 GPM





FLOW DIVIDER/COMBINER VALVE, SPOOL TYPE

DESCRIPTION

This unit is a spool type, screw in cartridge style, flow divider/combiner valve.

OPERATIONS

This valve divides flow from port 3 to ports 2 and 4 and combines flow from ports 2 and 4 to port 3 at the specified flow division regardless of load or system pressure.

Should the circuit operation result in blockage of either port 2 or 4, the opposite port will continue to flow but at a reduced flow rate to synchronize a cylinder.

FEATURES AND BENEFITS

Flow accuracy dividing or combining:

+/-5.0% of flows under 40% of the rated flow.

+/-2.5% of flows over 40% of the rated flow.

Quiet and stable operation over wide varying flow, pressure and temperature range.

All external carbon steel parts are plated for longer life against the elements.

All cartridge valves are 100% functionally tested.

Industry common cavity.

SPECIFICATIONS

OPERATING PRESSURE: 5,000 PSI [350 Bar]

PROOF PRESSURE: 10,000 PSI [700 Bar]

FLOW: 8.0 GPM [30 l/m] nominal. See performance chart.

VALVE HOUSINGS: 2500 PSI [175 Bar] = Aluminum - Anodized.

5000 PSI [350 Bar] = Steel - Unplated.

OPERATING TEMPERATURE: -40° to +250° F. [-40° to +120° C.]

OPERATING MEDIA: All general purpose hydraulic fluids such as

MIL-H-5606, SAE-#10, SAE-#20, etc.

INSTALLATION: No restrictions.

SEAL KIT: SKN-0842 Buna "N".

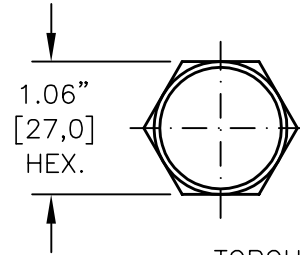
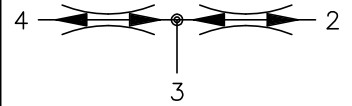
SKV-0842 Viton.

WEIGHT: .24 lb [.11 kg] cartridge only.

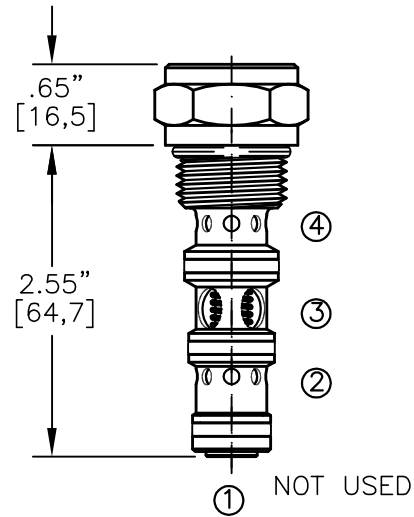
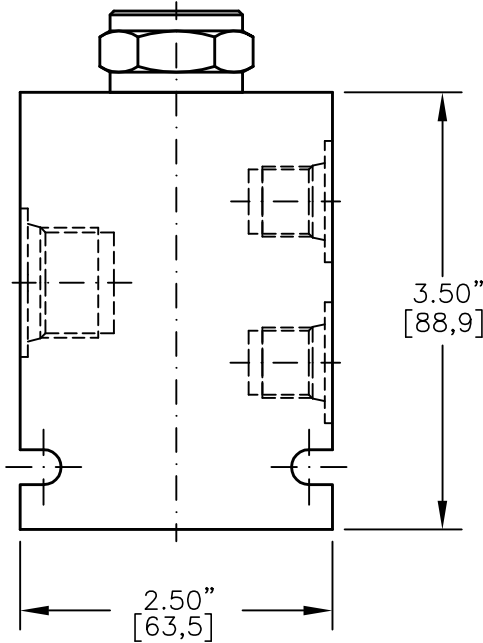
VALVE CAVITY: #C0840, See Page 0-041.0.



FLOW DIVIDER/COMBINER VALVE SPOOL TYPE.



TORQUE to 55/60 Ft-Lb.
[74/81 N-m]

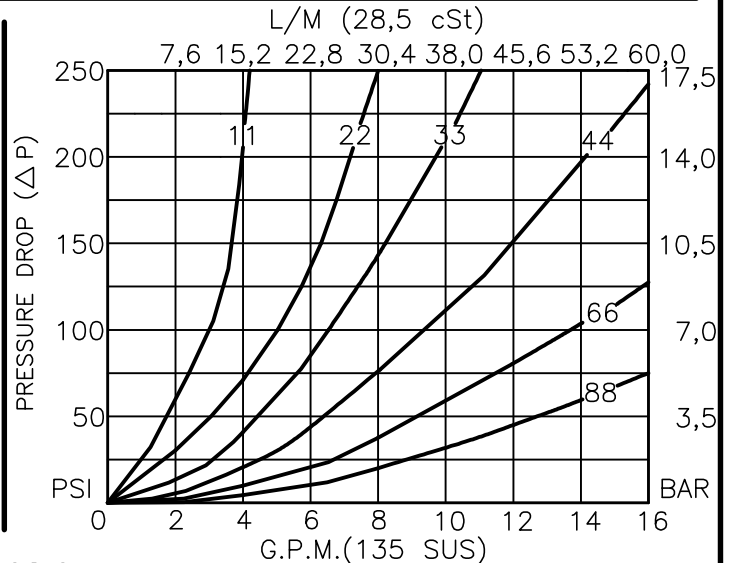


PORT #3 (INLET) IS ONE SIZE LARGER THAN PORTS #2 & #4 (OUTLET).
FOR ALUMINUM OR STEEL VALVE HOUSING CONFIGURATIONS SEE PAGE 0-042.2

FDCV-10-X-X-XX

- BASIC
- SIZE
10 = 7/8"-14 UNF
- SEALS
N = BUNA "N"
V = VITON
- PORT#3
0 = CARTRIDGE ONLY
03BX = G 3/8" BSPP
04BX = G 1/2" BSPP
08TX = SAE - #8
10TX = SAE - #10
"A" - ALUM. HOUSING
"S" - STEEL HOUSING

		FLOW DIVISION		
CODE	PORT#2	PORT#4	MAX FLOW	
11	50%	50%	2.0 GPM	
22	50%	50%	4.0 GPM	
33	50%	50%	6.0 GPM	
44	50%	50%	8.0 GPM	
66	50%	50%	12.0 GPM	
88	50%	50%	16.0 GPM	
12	33.3%	66.6%	3.0 GPM	
13	25%	75%	4.0 GPM	
24	33.3%	66.6%	6.0 GPM	
26	25%	75%	8.0 GPM	
36	33.3%	66.6%	9.0 GPM	
48	33.3%	66.6%	12.0 GPM	
21	66.6%	33.3%	3.0 GPM	
31	75%	25%	4.0 GPM	
42	66.6%	33.3%	6.0 GPM	
62	75%	25%	8.0 GPM	
63	66.6%	33.3%	9.0 GPM	
84	66.6%	33.3%	12.0 GPM	





FLOW DIVIDER/COMBINER VALVE SPOOL TYPE.

DESCRIPTION

This unit is a spool type, screw in cartridge style, flow divider/combiner valve.

OPERATIONS

This valve divides flow from port 3 to ports 2 and 4 and combines flow from ports 2 and 4 to port 3 at the specified flow division regardless of load or system pressure.

Should the circuit operation result in blockage of either port 2 or 4, the opposite port will continue to flow but at a reduced flow rate to synchronize a cylinder.

FEATURES AND BENEFITS

Flow accuracy dividing or combining:

+/-5.0% of flows under 40% of the rated flow.

+/-2.5% of flows over 40% of the rated flow.

Quiet and stable operation over wide varying flow, pressure and temperature range.

All external carbon steel parts are plated for longer life against the elements. All cartridge valves are 100% functionally tested.

Industry common cavity.

SPECIFICATIONS

OPERATING PRESSURE: 5,000 PSI [350 Bar]

PROOF PRESSURE: 10,000 PSI [700 Bar]

FLOW: 16.0 GPM [60 l/m] nominal. See performance chart.

VALVE HOUSINGS: 2500 PSI [175 Bar] = Aluminum - Anodized.

5000 PSI [350 Bar] = Steel - Unplated.

OPERATING TEMPERATURE: -40° to +250° F. [-40° to +120° C.]

OPERATING MEDIA: All general purpose hydraulic fluids such as

MIL-H-5606, SAE-#10, SAE-#20, etc.

INSTALLATION: No restrictions.

SEAL KIT: SKN-1040 Buna "N".

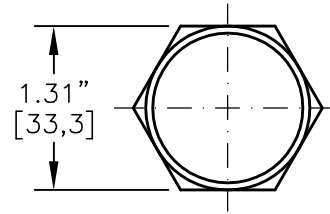
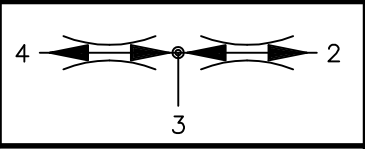
SKV-1040 Viton.

WEIGHT: .31 lb [.14 kg] cartridge only.

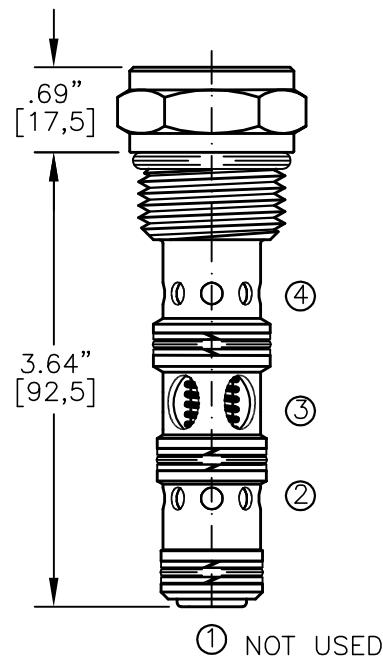
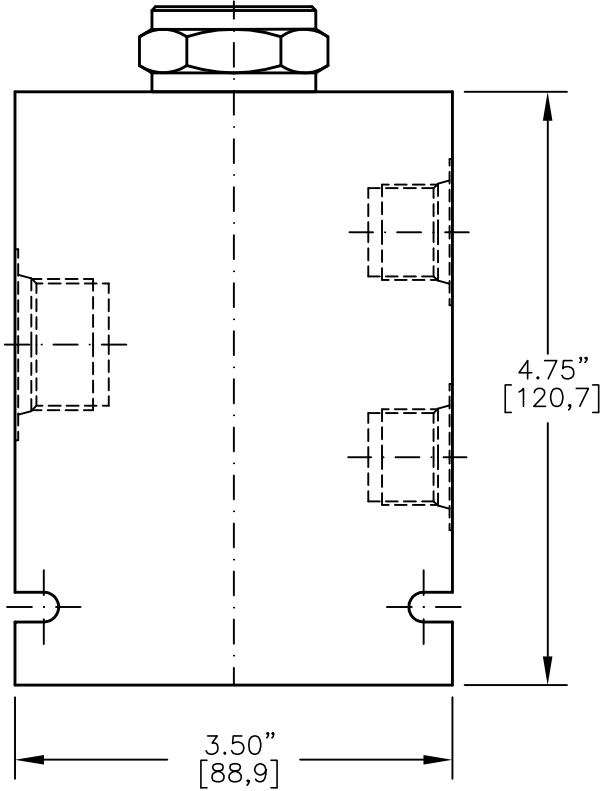
VALVE CAVITY: #C1040, See Page 0-042.0.



FLOW DIVIDER/COMBINER VALVE SPOOL TYPE.



TORQUE to 80/90 Ft-Lb.
[108/122 N-m]

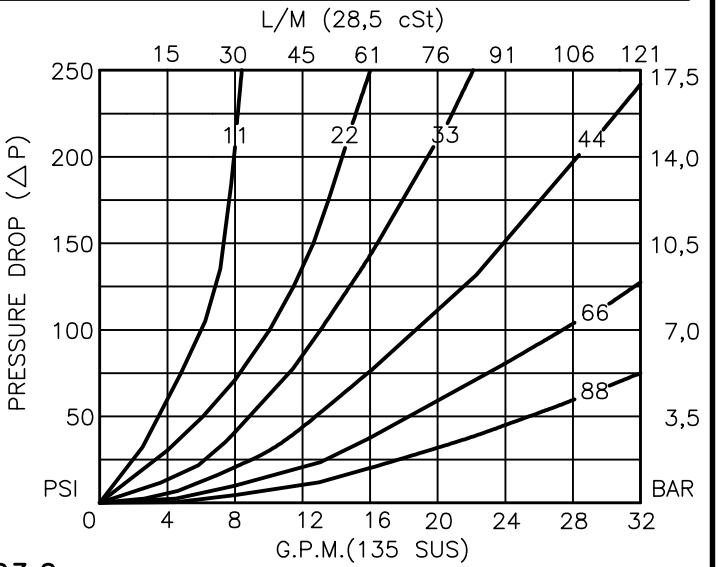


PORT #3 (INLET) IS ONE SIZE LARGER THAN PORTS #2 & #4 (OUTLETS).
FOR ALUMINUM OR STEEL VALVE HOUSING CONFIGURATIONS SEE PAGE 0-043.2

FDCV-12-X-X-XX

- BASIC
- SIZE
12 = 1.062-12 UNF
- SEALS
N = BUNA "N"
V = VITON
- PORT #3
0 = CARTRIDGE ONLY
06BX = G 3/4" BSPP
12TX = SAE - #12
"A" - ALUM. HOUSING
"S" - STEEL HOUSING

		FLOW DIVISION		
CODE	PORT #2	PORT #4	MAX FLOW	
11	50%	50%	4.0 GPM	
22	50%	50%	8.0 GPM	
33	50%	50%	12.0 GPM	
44	50%	50%	16.0 GPM	
66	50%	50%	24.0 GPM	
88	50%	50%	32.0 GPM	
12	33.3%	66.6%	6.0 GPM	
13	25%	75%	8.0 GPM	
24	33.3%	66.6%	12.0 GPM	
26	25%	75%	16.0 GPM	
36	33.3%	66.6%	18.0 GPM	
48	33.3%	66.6%	24.0 GPM	
21	66.6%	33.3%	6.0 GPM	
31	75%	25%	8.0 GPM	
42	66.6%	33.3%	12.0 GPM	
62	75%	25%	16.0 GPM	
63	66.6%	33.3%	18.0 GPM	
84	66.6%	33.3%	24.0 GPM	





FLOW DIVIDER/COMBINER VALVE SPOOL TYPE.

DESCRIPTION

This unit is a spool type, screw in cartridge style, flow divider/combiner valve.

OPERATIONS

This valve divides flow from port 3 to ports 2 and 4 and combines flow from ports 2 and 4 to port 3 at the specified flow division regardless of load or system pressure.

Should the circuit operation result in blockage of either port 2 or 4, the opposite port will continue to flow but at a reduced flow rate to synchronize a cylinder.

FEATURES AND BENEFITS

Flow accuracy dividing or combining:

+/-5.0% of flows under 40% of the rated flow.

+/-2.5% of flows over 40% of the rated flow.

Quiet and stable operation over wide varying flow, pressure and temperature range.

All external carbon steel parts are plated for longer life against the elements.

All cartridge valves are 100% functionally tested.

Ports 2 & 4 (outlets) are stepped down one size from port #3 (inlet).

SPECIFICATIONS

OPERATING PRESSURE: 5,000 PSI [350 Bar]

PROOF PRESSURE: 10,000 PSI [700 Bar]

FLOW: 32.0 GPM [121 l/m] nominal. See performance chart.

VALVE HOUSINGS: 2500 PSI [175 Bar] = Aluminum - Anodized.

5000 PSI [350 Bar] = Steel - Unplated.

OPERATING TEMPERATURE: -40° to +250° F. [-40° to +120° C.]

OPERATING MEDIA: All general purpose hydraulic fluids such as MIL-H-5606, SAE-#10, SAE-#20, etc.

INSTALLATION: No restrictions.

SEAL KIT: SKN-1242 Buna "N".

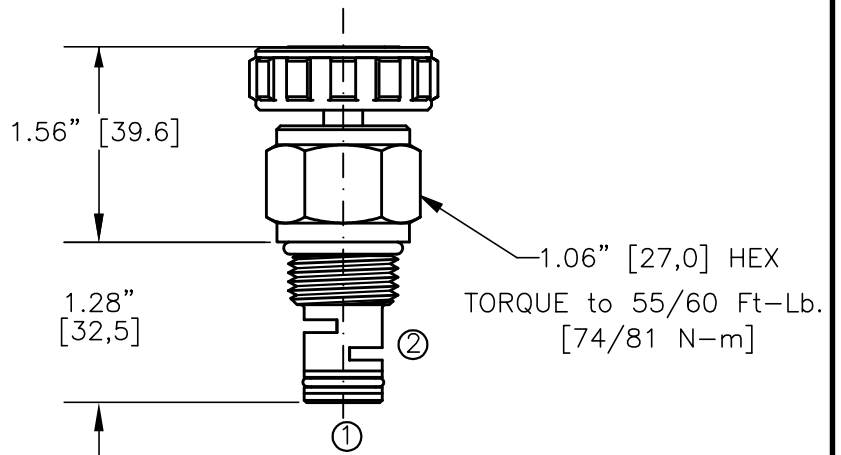
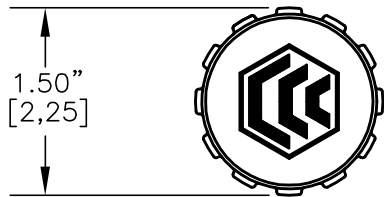
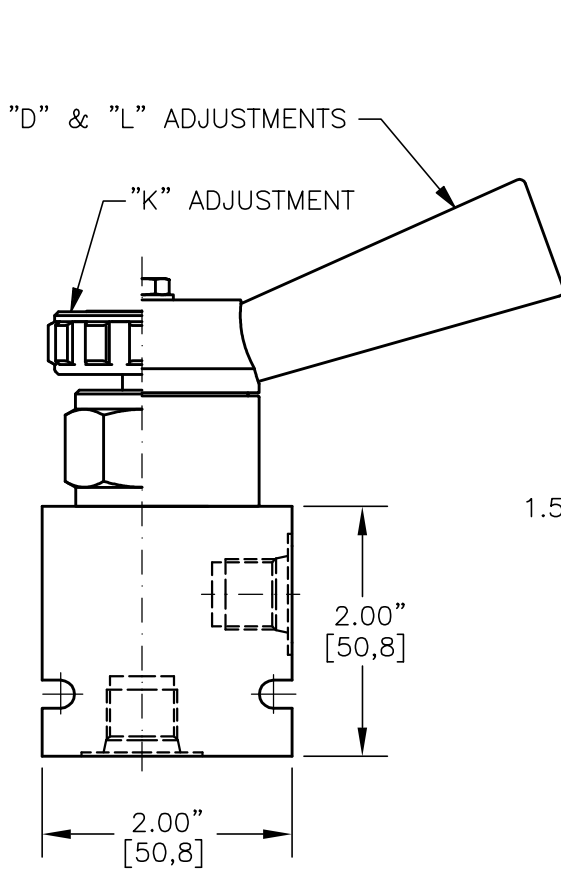
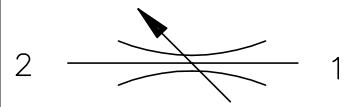
SKV-1242 Viton.

WEIGHT: .62 lb [.28 kg] cartridge only.

VALVE CAVITY: #C1240, See Page 0-043.0.



MANUAL ROTARY FLOW CONTROL VALVE



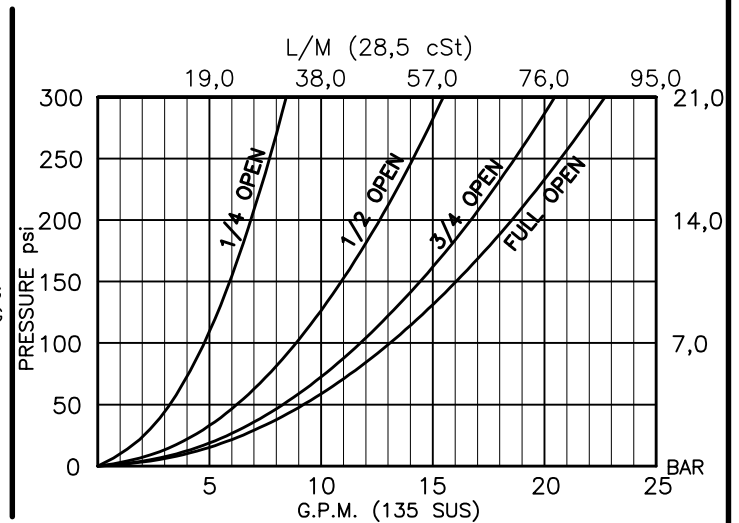
FOR ALUMINUM OR STEEL VALVE HOUSING CONFIGURATIONS SEE PAGE 0-012.1

MRFC-10-X-X-X

- BASIC
- SIZE
10 = 7/8"-14UNF
- SEALS
N = BUNA "N"
V = VITON
- ADJUSTMENT
K = HANDKNOB
H = METAL HANDKNOB
O = NO KNOB
G = GRADUATED METAL KNOB
D = LEVER WITH DETENTS
L = LEVER WITH FRICTION LOCK

- PORTS
0 = CARTRIDGE ONLY
02BX = G 1/4" BSPP
03BX = G 3/8" BSPP
06TX = SAE - #6
08TX = SAE - #8
"A" = ALUM. HOUSING
"S" = STEEL HOUSING

FOR ADJUSTMENT CONTROL OPTIONS SEE PAGE 0-050.1





MANUAL ROTARY FLOW CONTROL VALVE

DESCRIPTION

This unit is a SCREW IN, cartridge type, non-compensated, adjustable, bi-directional rotary flow control valve.

OPERATIONS

This valve increases its orifice value from fully closed to fully open in 1/2 turn with counterclockwise rotation.

FEATURES AND BENEFITS

Fine and low effort leakproof adjustment; knob is optional.
All external carbon steel parts are plated for longer life against the elements.
All cartridge valves are 100% functionally tested.
Industry common cavity.

SPECIFICATIONS

OPERATING PRESSURE: 5,000 PSI [350 Bar]
PROOF PRESSURE: 10,000 PSI [700 Bar]
FLOW: 18.0 GPM [68 l/m] nominal. See performance chart.
SHAFT ROTATION IS 160° FROM FULL OPEN TO CLOSED
INTERNAL LEAKAGE: 5 cu.in./min. [82 cc/m] @ 5,000 PSI (350 Bar)
VALVE HOUSINGS: 2500 PSI [175 Bar] = Aluminum - Anodized.
5000 PSI [350 Bar] = Steel - Unplated.
OPERATING TEMPERATURE: -40° to +250° F. [-40° to +120° C.]
OPERATING MEDIA: All general purpose hydraulic fluids such as
MIL-H-5606, SAE-#10, SAE-#20, etc.
INSTALLATION: No restrictions.
SEAL KIT: SKN-1022 Buna "N".
SKV-1022 Viton.
WEIGHT: .31 lb [.14 kg] cartridge only.
VALVE CAVITY: #C1020, See Page 0-012.0.