
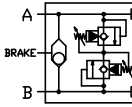
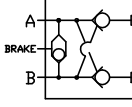
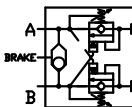
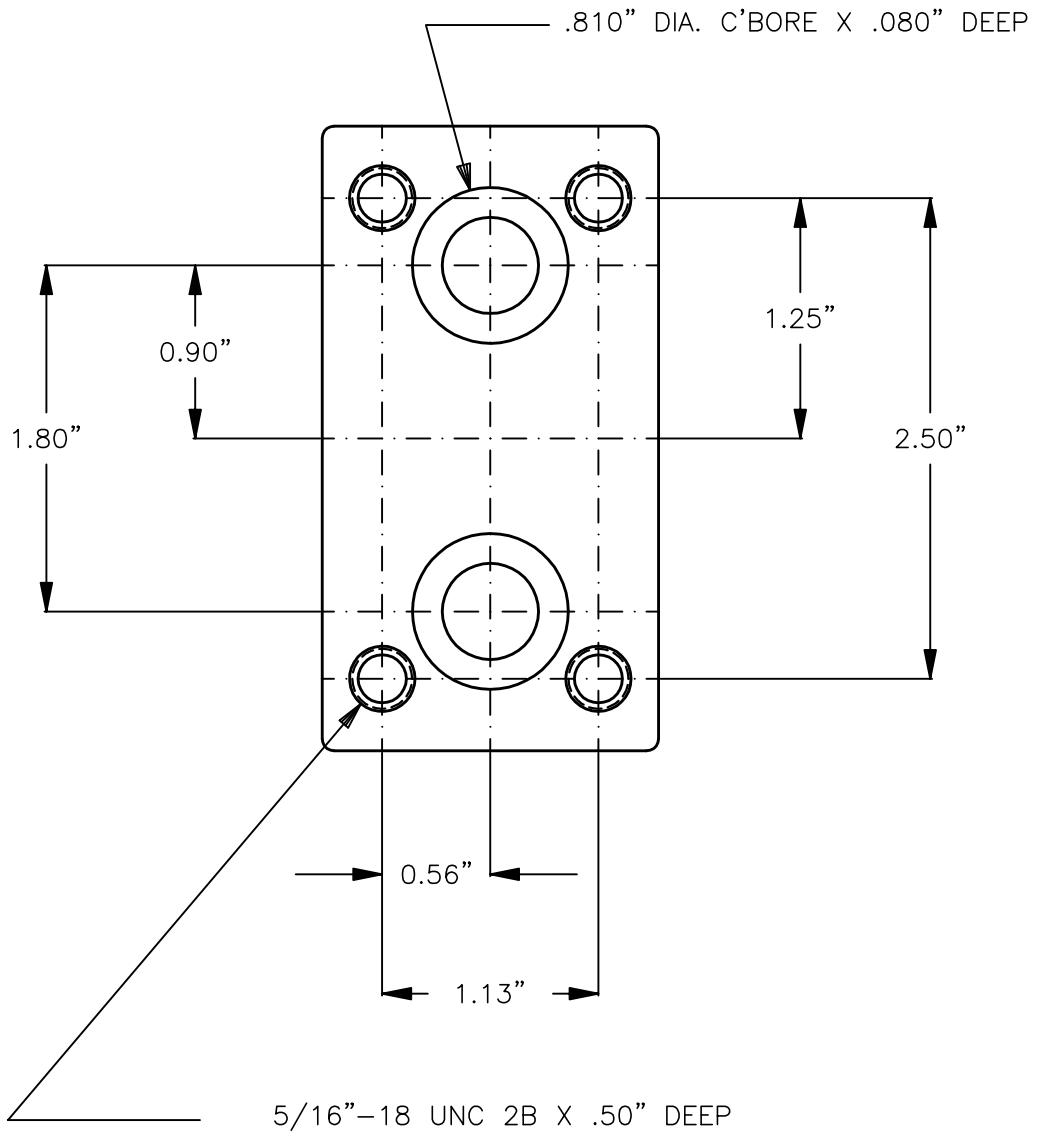


# Motor Mount Valves

	MODEL	DESCRIPTION	FLOW	CAVITY	PAGE NO.
	MMRB-30090-X	MANIFOLD MOUNT MOTOR PORTS MANIFOLD MOUNT RISER BLOCK			13-010.0 13-010.1
	MMRV-10	MOTOR MOUNT RELIEF VALVE	26 GPM	C1020	13-110.0
	MMPC-10	MOTOR MOUNT PILOTED CHECK	18 GPM	C1025	13-120.0
	MMCB-10 MMCB-12	MOTOR MOUNT COUNTERBALANCE	20 GPM 35 GPM	C1025 C1225	13-130.0 13-131.0

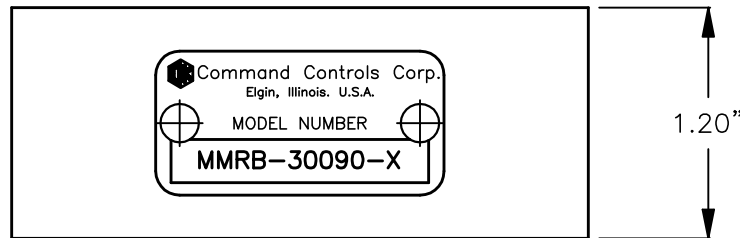
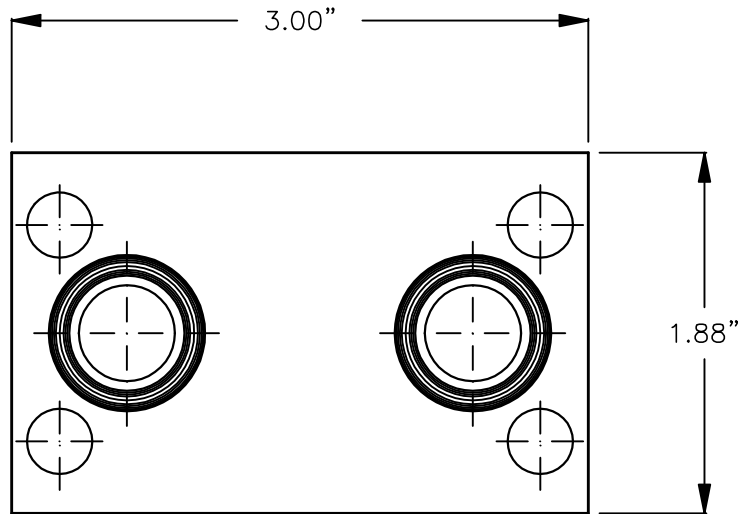


MANIFOLD MOUNT MOTOR PORTS





### MOTOR MOUNT RISER BLOCK



MMRB-30090-X

BASIC \_\_\_\_\_  
MOTOR MOUNT RISER BLOCK

SEALS \_\_\_\_\_  
N = BUNA (12113)  
V = VITON (14113)

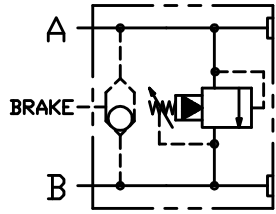
### DESCRIPTION

THIS UNIT IS A RISER BLOCK TO MOUNT IN BETWEEN THE VALVE AND A LOW SPEED HIGH TORQUE HYDRAULIC MOTOR SUCH AS EATON, WHITE, PARKER (HPI & ROSS), DANFOSS, ETC. WITH MANIFOLD MOUNTING DIMENSIONS SPECIFIED ON PAGE 13-010.0 TO CLEAR A LARGE REAR FLANGE OR A BRAKE.

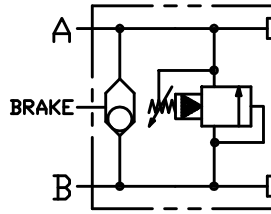
MATERIAL: ANODIZED ALUMINUM ALLOY.



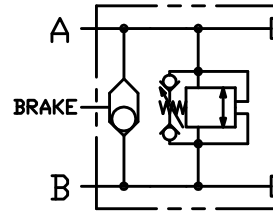
# MOTOR MOUNT RELIEF VALVE



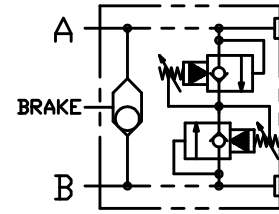
TYPE "A"  
"E"/SHUTTLE



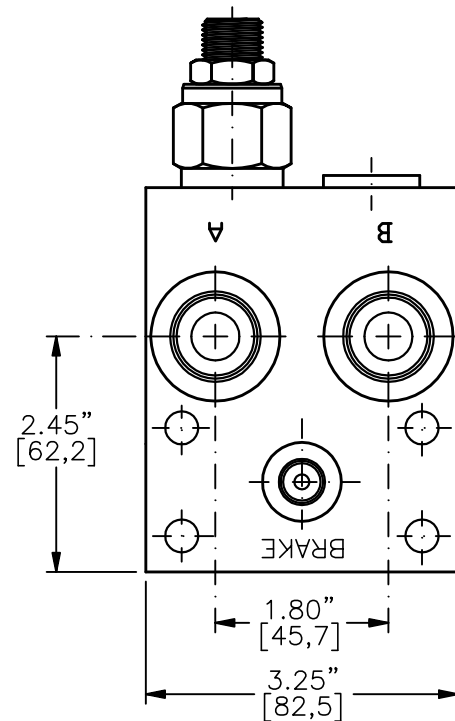
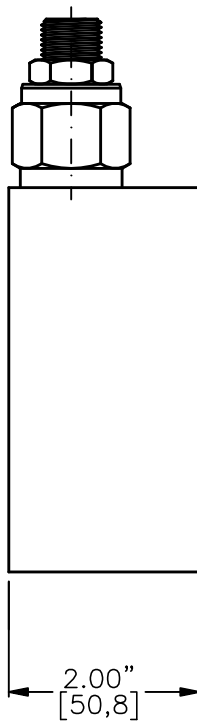
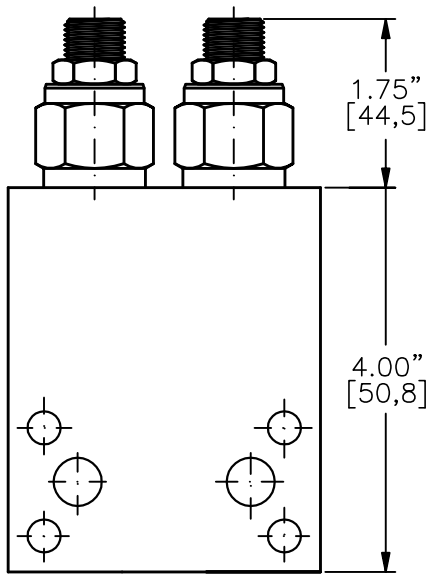
TYPE "B"  
"F"/SHUTTLE



TYPE "C"  
"G"/SHUTTLE



TYPE "D"  
"H"/SHUTTLE



**MMRV-10-X-X-X-10TA-XX-XX**

BASIC \_\_\_\_\_  
 SIZE \_\_\_\_\_  
 10 = 7/8"-14UNF

SEALS \_\_\_\_\_  
 N = BUNA "N"  
 V = VITON

ADJUSTMENT \_\_\_\_\_  
 C = CAPPED  
 S = SCREW  
 T = TAMPERPROOF

USE ON  
 "D" & "H" ONLY

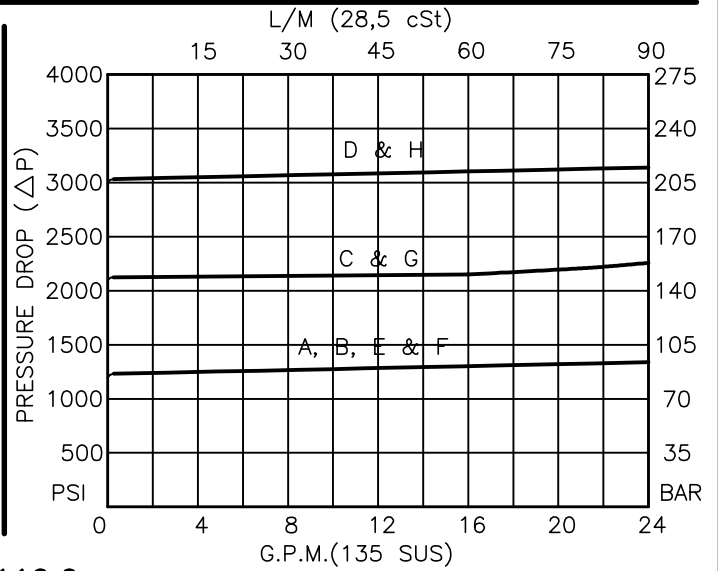
PRESSURE RANGE  
 15 = 0 TO 1500 PSI  
 30 = 0 TO 3000 PSI

PORTS  
 10TA = SAE - #10

OTHER PORTS AVAILABLE  
 UPON REQUEST

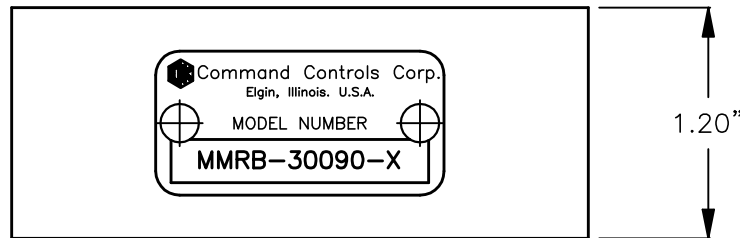
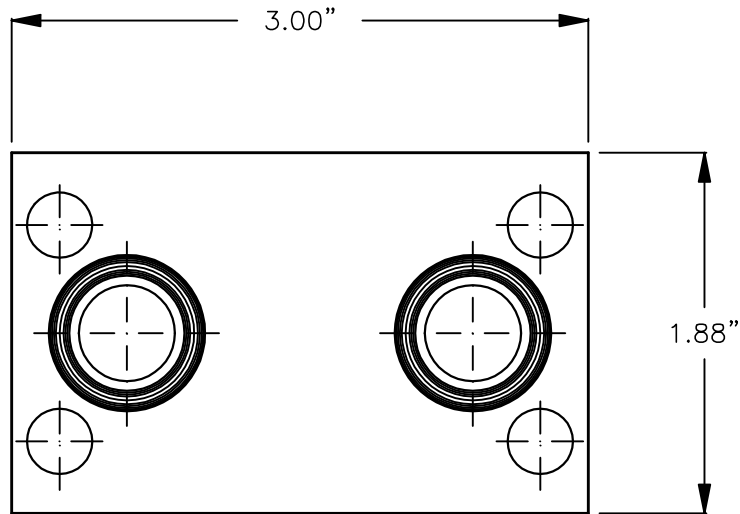
TYPE  
 "A", "B", "C", "D", "E", "F", "G" & "H"  
 (SEE OTHER SIDE PAGE 13-110.1)

FOR ADJUSTMENT CONTROL  
 OPTIONS SEE PAGE 0-050.0





### MOTOR MOUNT RISER BLOCK



MMRB-30090-X

BASIC \_\_\_\_\_  
 MOTOR MOUNT RISER BLOCK

SEALS  
 N = BUNA (12113)  
 V = VITON (14113)

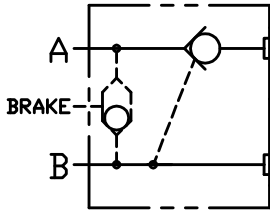
### DESCRIPTION

THIS UNIT IS A RISER BLOCK TO MOUNT IN BETWEEN THE VALVE AND A LOW SPEED HIGH TORQUE HYDRAULIC MOTOR SUCH AS EATON, WHITE, PARKER (HPI & ROSS), DANFOSS, ETC. WITH MANIFOLD MOUNTING DIMENSIONS SPECIFIED ON PAGE 13-010.0 TO CLEAR A LARGE REAR FLANGE OR A BRAKE.

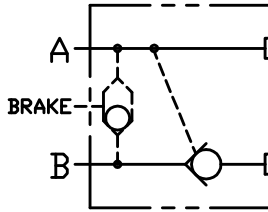
MATERIAL: ANODIZED ALUMINUM ALLOY.



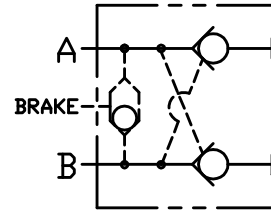
# MOTOR MOUNT PILOTED CHECK



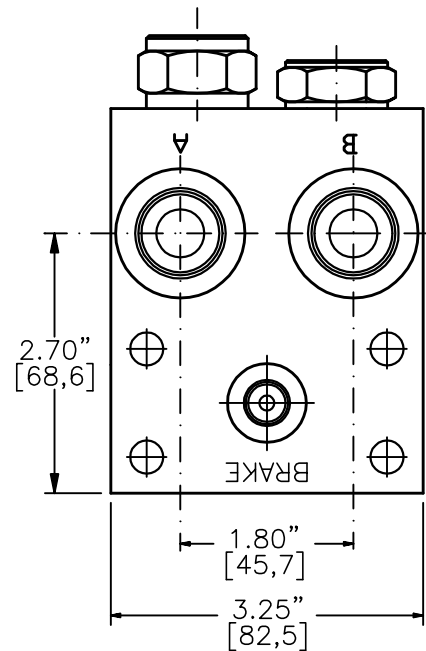
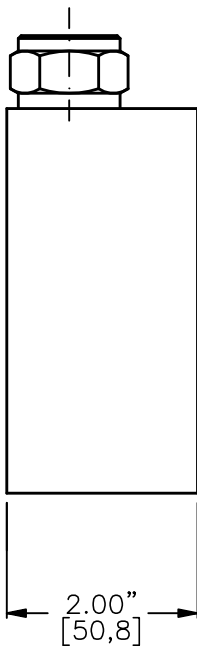
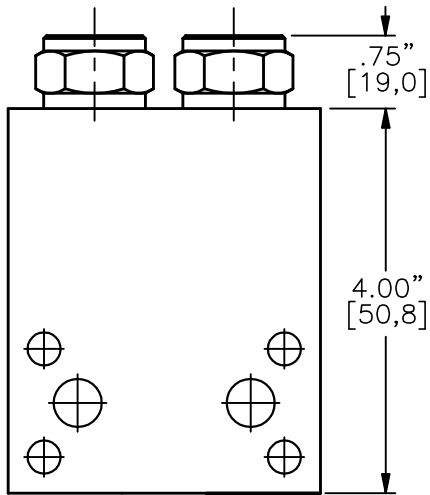
TYPE "A"  
"D"/SHUTTLE



TYPE "B"  
"E"/SHUTTLE



TYPE "C"  
"F"/SHUTTLE



## MMPC-10-X-X-X-10TA-XXX

BASIC

SIZE

10 = 7/8"-14UNF

SEALS

N = BUNA "N"

V = VITON

ADJUSTMENT

F = FIXED (STANDARD)

M = MANUAL LOAD RELEASE

CRACK PRESSURE

010 = 10 PSI

030 = 30 PSI

060 = 60 PSI

PORTS

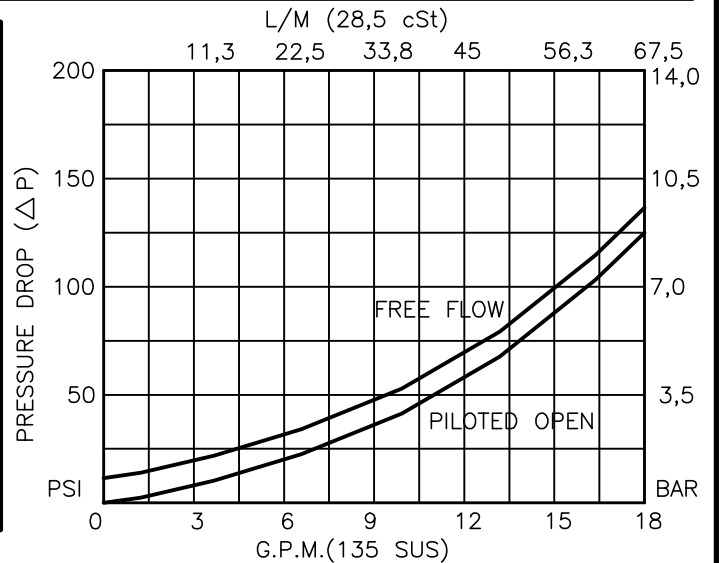
10TA = SAE - #10

OTHER PORTS AVAILABLE  
UPON REQUEST

TYPE

"A", "B", "C", "D", "E" & "F"

(SEE OTHER SIDE PAGE 13-120.1)





## MOTOR MOUNT PILOTED CHECK

### DESCRIPTION

THIS UNIT IS A PILOT OPERATED CHECK VALVE TO MOUNT ON TO A LOW SPEED HIGH TORQUE HYDRAULIC MOTOR SUCH AS EATON, WHITE, PARKER (HPI & ROSS), DANFOSS, ETC. WITH MANIFOLD MOUNTING DIMENSIONS SPECIFIED ON PAGE 13-010.0

SEE PAGE 8-022.0 FOR MORE INFORMATION ON PERFORMANCE DATA AND OTHER OPTIONS OF THE CARTRIDGE #POCI-10-N-F-0-XX.

### OPERATIONS

TYPE	CHECKED PORT	CARTRIDGE VALVE
A	"A"	POCI-10-X-X-0-XX
B	"B"	POCI-10-X-X-0-XX
C	"A" & "B"	POCI-10-X-X-0-XX
D	"A"	WITH BRAKE SHUTTLE
E	"B"	WITH BRAKE SHUTTLE
F	"A" & "B"	WITH BRAKE SHUTTLE

### SPECIFICATIONS

OPERATING PRESSURE: 3000 PSI [210 BAR].

OPERATING TEMPERATURE: -40° TO +250° F. [-40° TO +120° C.].

OPERATING MEDIA: ALL GENERAL PURPOSE HYDRAULIC FLUIDS.

BRAKE PORT WHEN REQUIRED IS SAE-#4 (7/16"-20 UNF THD.)

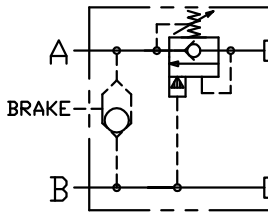
MATERIAL: ANODIZED ALUMINIUM ALLOY BODY.

PILOT RATIO: 3 TO 1.

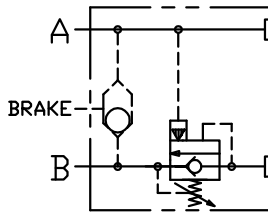
OPTIONAL: PROVISIONS CAN BE MADE TO CLEAR THE MOUNTING BOLT ON THE SAE "A" FLANGE MOUNT MOTOR WITH MOUNTING HOLE ON THE SAME SIDE AS THE WORKING PORTS "A" AND "B".



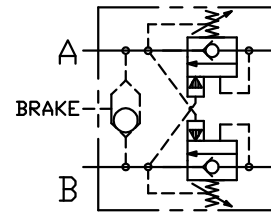
# MOTOR MOUNT COUNTERBALANCE



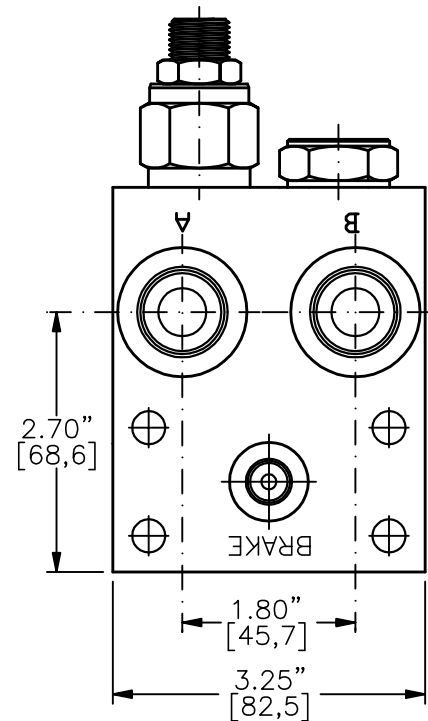
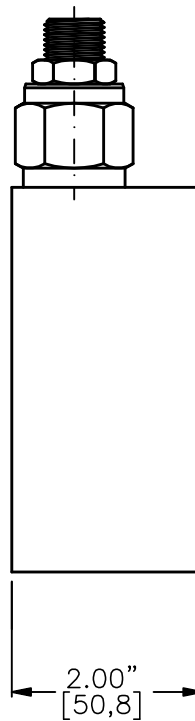
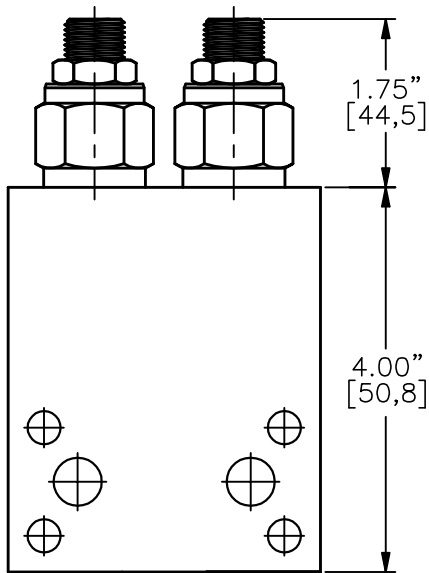
TYPE "A"  
"D"/SHUTTLE



TYPE "B"  
"E"/SHUTTLE



TYPE "C"  
"F"/SHUTTLE



## MMCB-10-X-X-X-10TA-XX

BASIC  
 SIZE  
 10 = 7/8"-14UNF

SEALS  
 N = BUNA "N"  
 V = VITON

ADJUSTMENT  
 C = CAPPED  
 S = SCREW  
 T = TAMPERPROOF

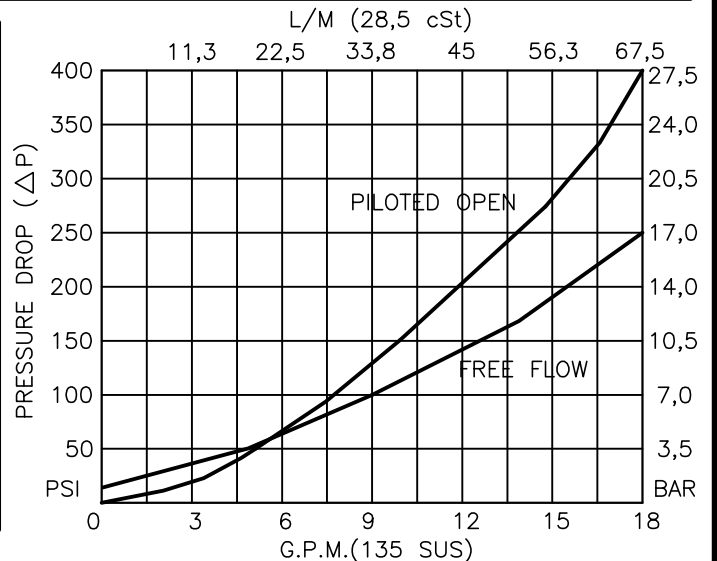
PRESSURE RANGE  
 15 = 100 TO 1500 PSI  
 30 = 300 TO 3000 PSI

PORTS  
 10TA = SAE - #10

OTHER PORTS AVAILABLE  
 UPON REQUEST

TYPE  
 "A", "B", "C", "D", "E" & "F"  
 (SEE OTHER SIDE PAGE 13-130.1)

FOR ADJUSTMENT CONTROL  
 OPTIONS SEE PAGE 0-050.0





## MOTOR MOUNT COUNTERBALANCE

### DESCRIPTION

THIS UNIT IS A COUNTERBALANCE VALVE TO MOUNT ON TO A LOW SPEED HIGH TORQUE HYDRAULIC MOTOR SUCH AS EATON, WHITE, PARKER (HPI & ROSS), DANFOSS, ETC. WITH MANIFOLD MOUNTING DIMENSIONS SPECIFIED ON PAGE 13-010.0

SEE PAGE 8-052.0 FOR MORE INFORMATION ON PERFORMANCE DATA AND OTHER OPTIONS OF THE CARTRIDGE #CBPA-10-N-S-0-XX.

### OPERATIONS

TYPE	PORT COUNTERBALANCED	CARTRIDGE VALVE
A	"A"	CBPA-10-X-X-0-XX
B	"B"	CBPA-10-X-X-0-XX
C	"A" & "B"	CBPA-10-X-X-0-XX
D	"A" E	WITH BRAKE SHUTTLE
E	"B"	WITH BRAKE SHUTTLE
F	"A" & "B"	WITH BRAKE SHUTTLE

### SPECIFICATIONS

OPERATING PRESSURE: 3000 PSI [210 BAR].

OPERATING TEMPERATURE: -40 TO +250 F [-40 TO +120 C].

OPERATING MEDIA: ALL GENERAL PURPOSE HYDRAULIC FLUIDS.

BRAKE PORT WHEN REQUIRED IS SAE-#4 (7/16"-20 UNF THD.)

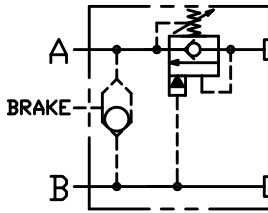
MATERIAL: ANODIZED ALUMINIUM ALLOY BODY.

PILOT RATIO: 4 TO 1.

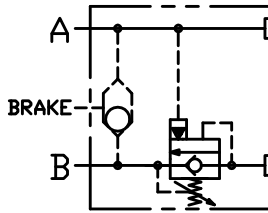
OPTIONAL: PROVISIONS CAN BE MADE TO CLEAR THE MOUNTING BOLT ON THE SAE "A" FLANGE MOUNT MOTOR WITH MOUNTING HOLE ON THE SAME SIDE AS THE WORKING PORTS "A" AND "B".



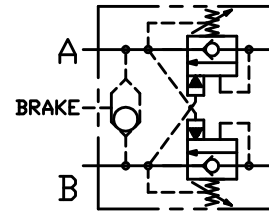
# MOTOR MOUNT COUNTERBALANCE



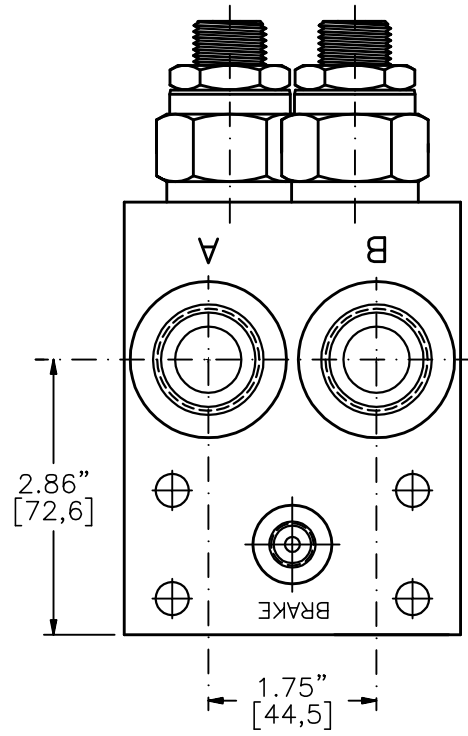
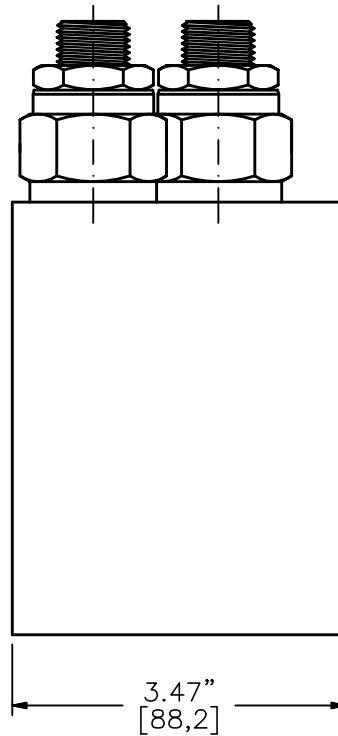
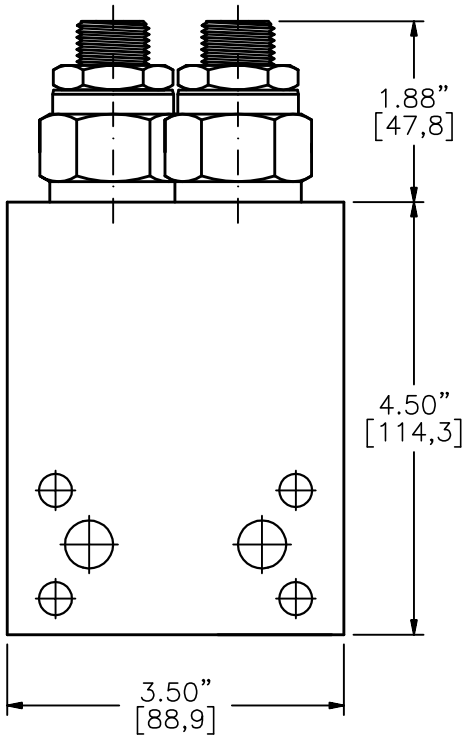
TYPE "A"  
"D"/SHUTTLE



TYPE "B"  
"E"/SHUTTLE



TYPE "C"  
"F"/SHUTTLE



## MMCB-12-X-X-X-12TA-XX

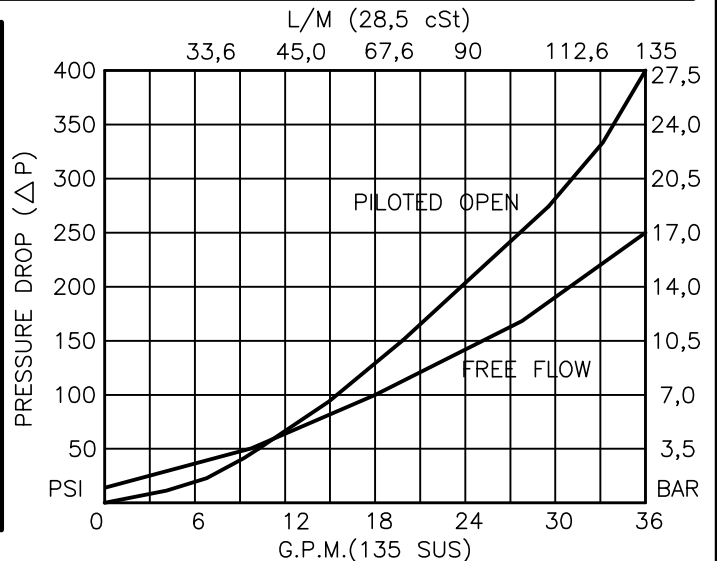
BASIC  
 SIZE  
 12 = 1.062"-12UNF  
 SEALS  
 N = BUNA "N"  
 V = VITON  
 ADJUSTMENT  
 C = CAPPED  
 S = SCREW  
 T = TAMPERPROOF

PRESSURE RANGE  
 15 = 0 TO 1500 PSI  
 30 = 0 TO 3000 PSI

PORTS  
 12TA = SAE - #12  
 OTHER PORTS AVAILABLE  
 UPON REQUEST

TYPE  
 "A", "B", "C", "D", "E" & "F"  
 (SEE OTHER SIDE PAGE 13-131.1)

FOR ADJUSTMENT CONTROL  
 OPTIONS SEE PAGE 0-050.0





## MOTOR MOUNT COUNTERBALANCE

### DESCRIPTION

THIS UNIT IS A COUNTERBALANCE VALVE TO MOUNT ON TO A LOW SPEED HIGH TORQUE HYDRAULIC MOTOR SUCH AS EATON, WHITE, PARKER (HPI & ROSS), DANFOSS, ETC. WITH MANIFOLD MOUNTING DIMENSIONS SPECIFIED ON PAGE 13-010.0

SEE PAGE 8-053.0 FOR MORE INFORMATION ON PERFORMANCE DATA AND OTHER OPTIONS OF THE CARTRIDGE #CBPA-12-N-S-0-XX.

### OPERATIONS

TYPE	PORT COUNTERBALANCED	CARTRIDGE VALVE
A	"A"	CBPA-12-X-X-0-XX
B	"B"	CBPA-12-X-X-0-XX
C	"A" & "B"	CBPA-12-X-X-0-XX
D	"A"	WITH BRAKE SHUTTLE
E	"B"	WITH BRAKE SHUTTLE
F	"A" & "B"	WITH BRAKE SHUTTLE

### SPECIFICATIONS

OPERATING PRESSURE: 3000 PSI [210 BAR].

OPERATING TEMPERATURE: -40 TO +250 F [-40 TO +120 C].

OPERATING MEDIA: ALL GENERAL PURPOSE HYDRAULIC FLUIDS.

BRAKE PORT WHEN REQUIRED IS SAE-#4 (7/16"-20 UNF THD.)

MATERIAL: ANODIZED ALUMINIUM ALLOY BODY.

PILOT RATIO: 4 TO 1.

OPTIONAL: PROVISIONS CAN BE MADE TO CLEAR THE MOUNTING BOLT ON THE SAE "A" FLANGE MOUNT MOTOR WITH MOUNTING HOLE ON THE SAME SIDE AS THE WORKING PORTS "A" AND "B".