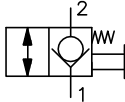
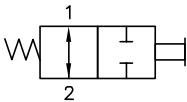
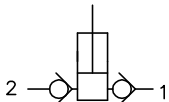
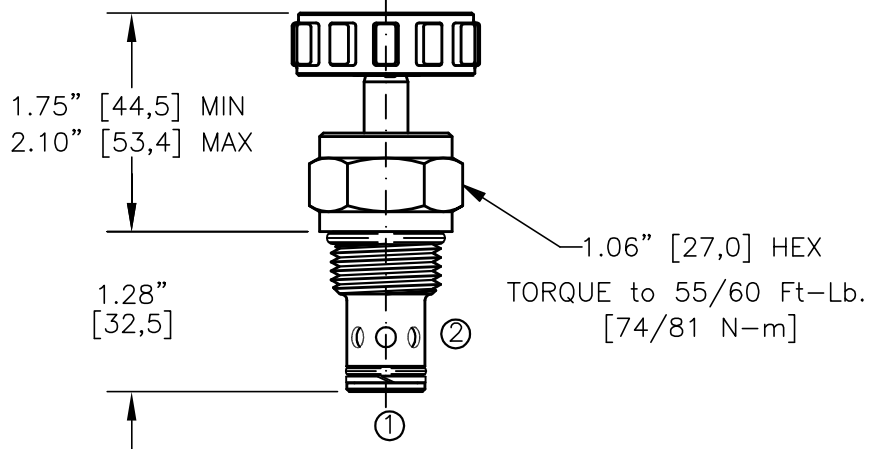
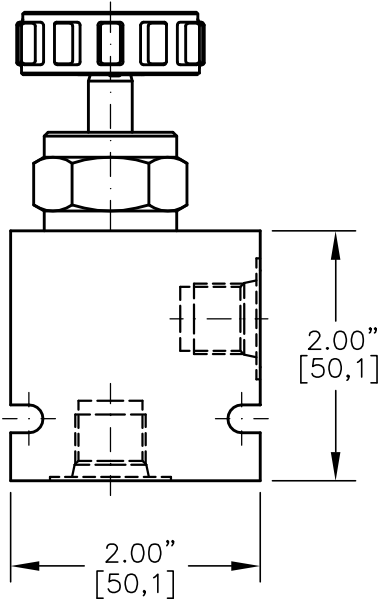
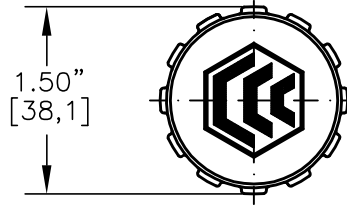
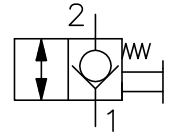


## Manual Valves

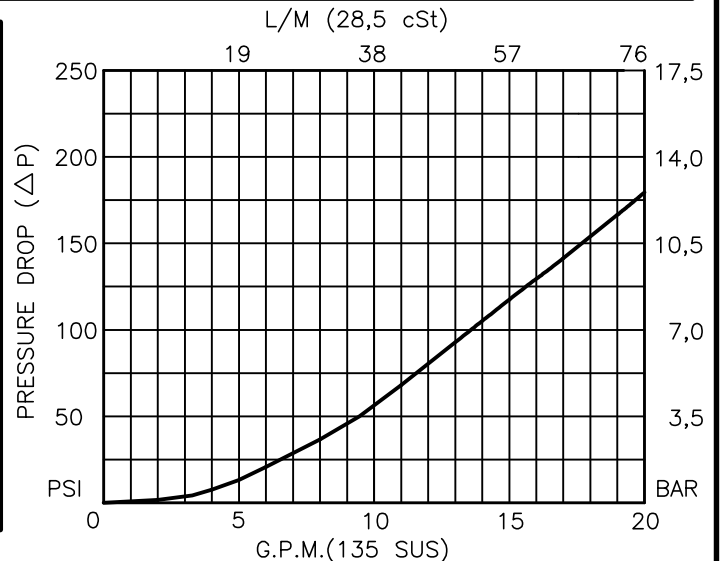
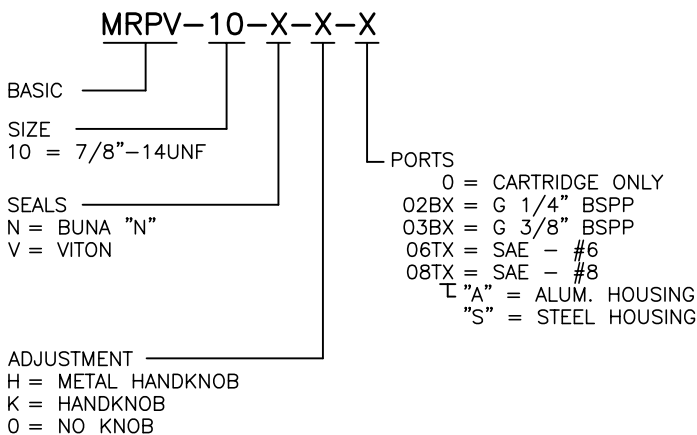
	MODEL	DESCRIPTION	FLOW	CAVITY	PAGE NO.
	MRPV-10	MANUAL RELEASE VALVE, PULL TO OPEN	18 GPM	C1020	12-012.0
	MPTC-10	MANUAL VALVE, PUSH TO CLOSE	6 GPM	C1020	12-032.0
	CMHP-10	MANUAL HAND PUMP	.25 CU. IN./STROKE	C1020	12-100.0



MANUAL RELEASE VALVE  
PULL TO OPEN



FOR ALUMINUM OR STEEL VALVE HOUSING CONFIGURATIONS SEE PAGE 0-012.1



FOR ADJUSTMENT CONTROL  
OPTIONS SEE PAGE 0-050.1



## MANUAL RELEASE VALVE PULL TO OPEN

### DESCRIPTION

This unit is a SCREW IN, cartridge type, guided poppet, spring biased closed, pull to open, hydraulic manual release valve.

### OPERATIONS

This valve allows free flow from port 1 to port 2 at 175 PSI [12,0 BAR] and blocks flow from port 2 to port 1 or holding a load.

### FEATURES AND BENEFITS

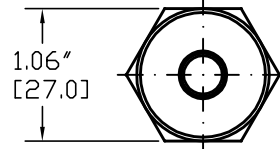
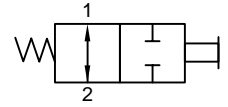
Low effort leakproof valve stem; knob is optional.  
Pull to open mechanical effort at rated pressure is 17.5 LBS [8,0 KG.]  
All external carbon steel parts are plated for longer life against the elements.  
All cartridge valves are 100% functionally tested.  
Industry common cavity.

### SPECIFICATIONS

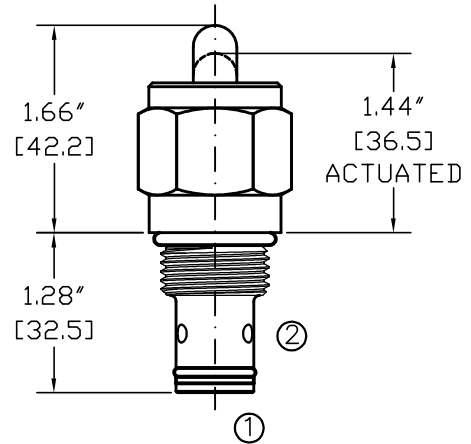
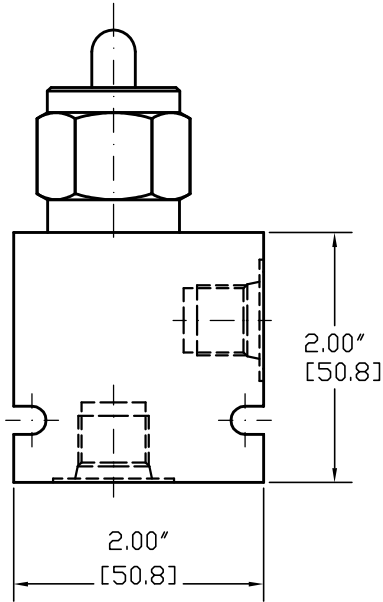
OPERATING PRESSURE: 5,000 PSI [350 Bar]  
PROOF PRESSURE: 10,000 PSI [700 Bar]  
FLOW: 18.0 GPM [70 l/m] nominal. See performance chart.  
INTERNAL LEAKAGE: 5 drops per minute maximum @ 5,000 PSI (350 Bar)  
VALVE HOUSINGS: 2500 PSI [175 Bar] = Aluminum - Anodized.  
5000 PSI [350 Bar] = Steel - Unplated.  
OPERATING TEMPERATURE: -40° to +250° F. [-40° to +120° C.]  
OPERATING MEDIA: All general purpose hydraulic fluids such as  
MIL-H-5606, SAE-#10, SAE-#20, etc.  
INSTALATION: No restrictions.  
SEAL KIT: SKN-1021 Buna "N".  
SKV-1021 Viton.  
WEIGHT: .31 lb [.14 kg] cartridge only.  
VALVE CAVITY: #C1020, See Page 0-012.0.



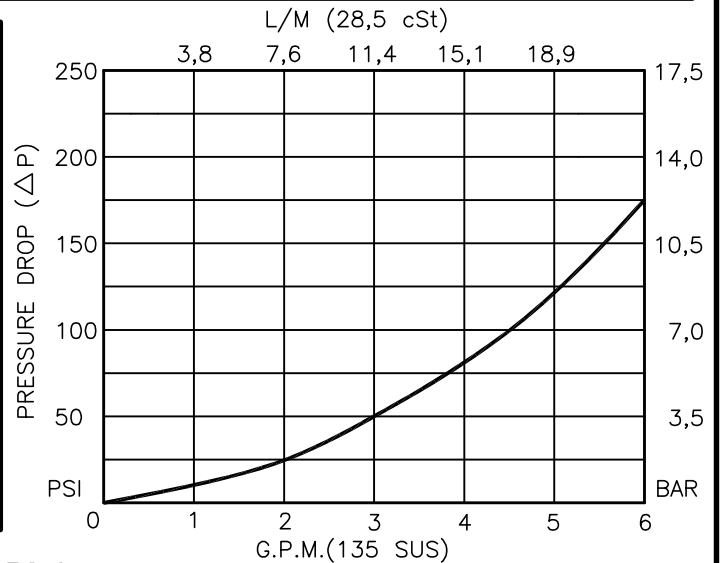
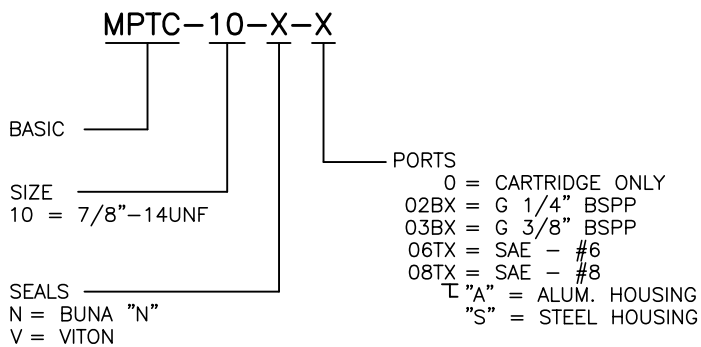
# MANUAL VALVE PUSH TO CLOSE



TORQUE to 55/60 Ft-Lb.  
[74/81 N-m]



FOR ALUMINUM OR STEEL VALVE HOUSING CONFIGURATIONS SEE PAGE 0-012.1





## MANUAL VALVE PUSH TO CLOSE

### DESCRIPTION

This unit is a SCREW IN, cartridge type, guided spool, spring biased open, push to close, hydraulic manual valve.

### OPERATIONS

This valve allows flow between ports 1 and 2. When valve is actuated, the spool in this valve is shifted and allows no flow between ports 1 and 2.

### FEATURES AND BENEFITS

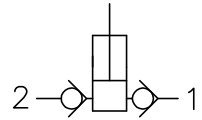
Low effort leakproof valve stem.  
Push to close mechanical effort at rated pressure is 17.5 LBS [8,0 KG.]  
All external carbon steel parts are plated for longer life against the elements.  
All cartridge valves are 100% functionally tested.  
Industry common cavity.

### SPECIFICATIONS

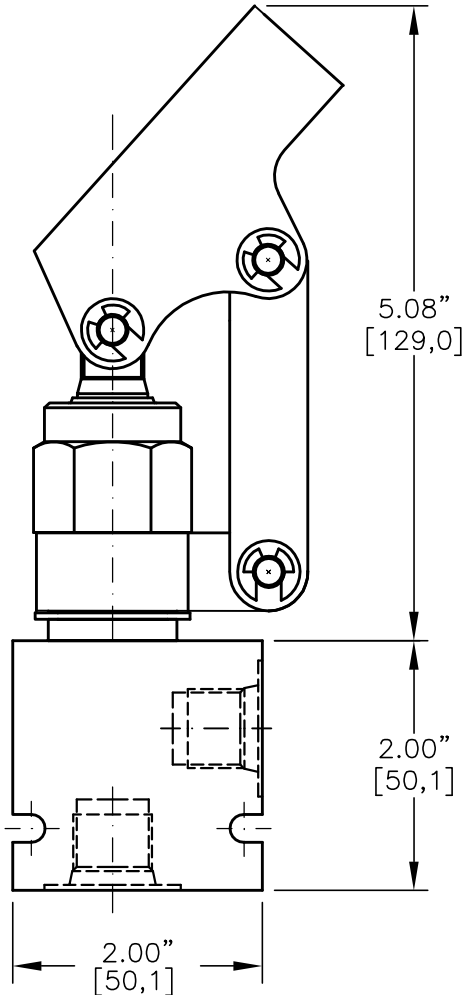
OPERATING PRESSURE: 5,000 PSI [350 Bar]  
PROOF PRESSURE: 10,000 PSI [700 Bar]  
FLOW: 6.0 GPM [22.7 l/m] nominal. See performance chart.  
INTERNAL LEAKAGE: 5 cu.in/min [82 cc/min] @ 5,000 PSI (350 Bar)  
VALVE HOUSINGS: 2500 PSI [175 Bar] = Aluminum - Anodized.  
5000 PSI [350 Bar] = Steel - Unplated.  
OPERATING TEMPERATURE: -40° to +250° F. [-40° to +120° C.]  
OPERATING MEDIA: All general purpose hydraulic fluids such as  
MIL-H-5606, SAE-#10, SAE-#20, etc.  
INSTALLATION: No restrictions.  
FILTRATION: 25 microns or better.  
SEAL KIT: SKN-1021 Buna "N".  
SKV-1021 Viton.  
WEIGHT: .31 lb [.14 kg] cartridge only.  
VALVE CAVITY: #C1020, See Page 0-012.0.



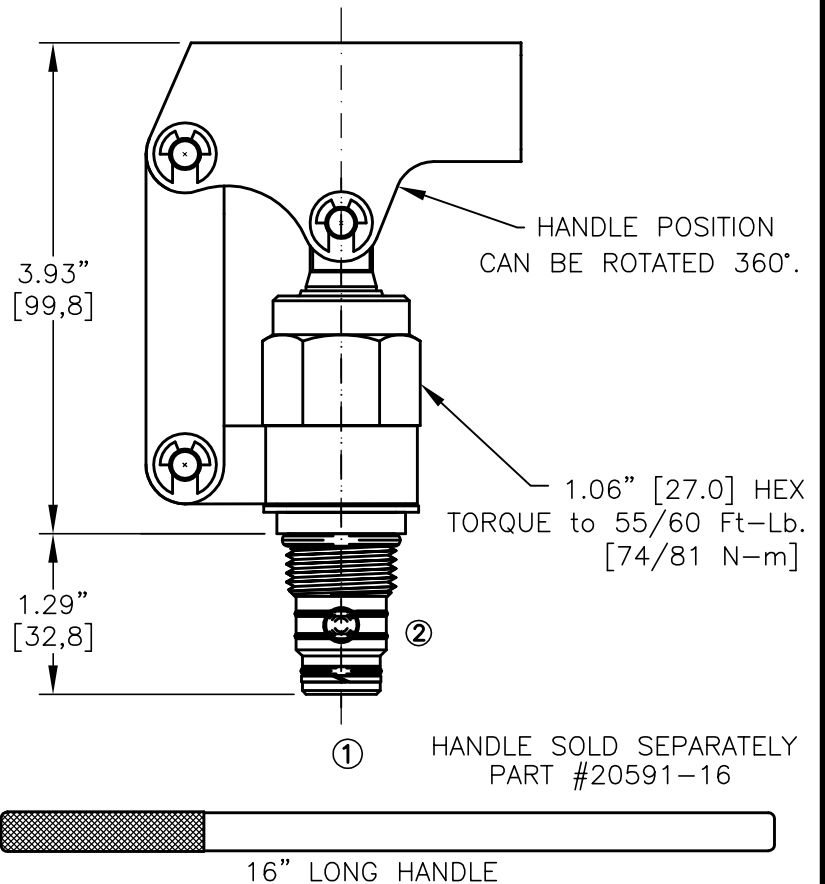
# CARTRIDGE MANUAL HAND PUMP PUSH TO PRESSURIZE OR PULL TO PRESSURIZE



PULL TO PRESSURIZE



PUSH TO PRESSURIZE



HANDLE SOLD SEPARATELY  
PART #20591-16

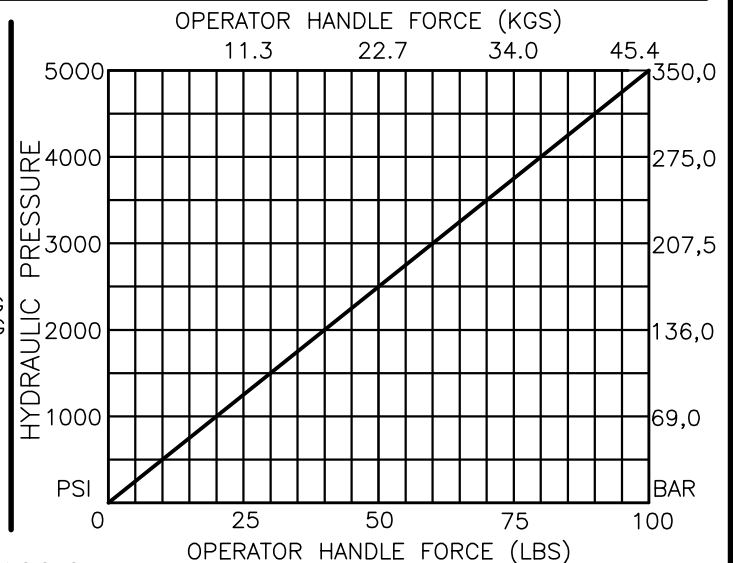
FOR ALUMINUM OR STEEL VALVE HOUSING CONFIGURATIONS SEE PAGE 0-012.1

## CMHP-10-X-X-X

BASIC \_\_\_\_\_  
SIZE \_\_\_\_\_  
10 = 7/8"-14UNF  
SEALS \_\_\_\_\_  
N = BUNA "N"  
V = VITON

PORTS  
0 = CARTRIDGE ONLY  
02BX = G 1/4" BSPP  
03BX = G 3/8" BSPP  
06TX = SAE - #6  
08TX = SAE - #8  
"A" = ALUM. HOUSING  
"S" = STEEL HOUSING

TYPE \_\_\_\_\_  
2 = .250 CUBIC INCHES (4.0 CC)  
DISPLACEMENT PER FULL STROKE



12-100.0



## CARTRIDGE MANUAL HAND PUMP PULL TO PRESSURIZE OR PUSH TO PRESSURIZE

### DESCRIPTION

This unit is a SCREW IN, cartridge type, plunger type, push to pressurize or pull to pressurize, hydraulic manual hand pump.

### OPERATIONS

This hand pump allows free flow from port 1 to port 2 when plunger is pulled out and pressurize port 2 when plunger is pushed in. Handle position can be rotated 360° around the vertical axis.

### FEATURES AND BENEFITS

Low effort leakproof pump plunger with 16" handle delivers .250 cu/in per one full stroke.

Pull the plunger out to fill the cylinder, push the plunger in to pressurize.

All external carbon steel parts are plated for longer life against the elements.

All cartridge hand pumps are 100% functionally tested.

Industry common cavity.

### SPECIFICATIONS

OPERATING PRESSURE: 5,000 PSI [350 Bar]

PROOF PRESSURE: 10,000 PSI [700 Bar]

FLOW: .250 cu/in [4,0 cc] per full stroke . See performance chart.

INTERNAL LEAKAGE: 5 drops per minute maximum @ 5,000 PSI (350 Bar)

VALVE HOUSINGS: 2500 PSI [175 Bar] = Aluminum - Anodized.

5000 PSI [350 Bar] = Steel - Unplated.

OPERATING TEMPERATURE: -40° to +250° F. [-40° to +120° C.]

OPERATING MEDIA: All general purpose hydraulic fluids such as MIL-H-5606, SAE-#10, SAE-#20, etc.

INSTALLATION: No restrictions.

SEAL KIT: SKN-1021 Buna "N".

SKV-1021 Viton.

WEIGHT: 2.9 lb [.85 kg] cartridge with handle.

VALVE CAVITY: #C1020, See Page 0-012.0.