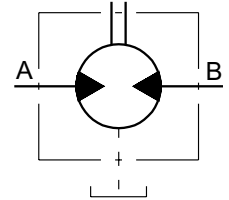


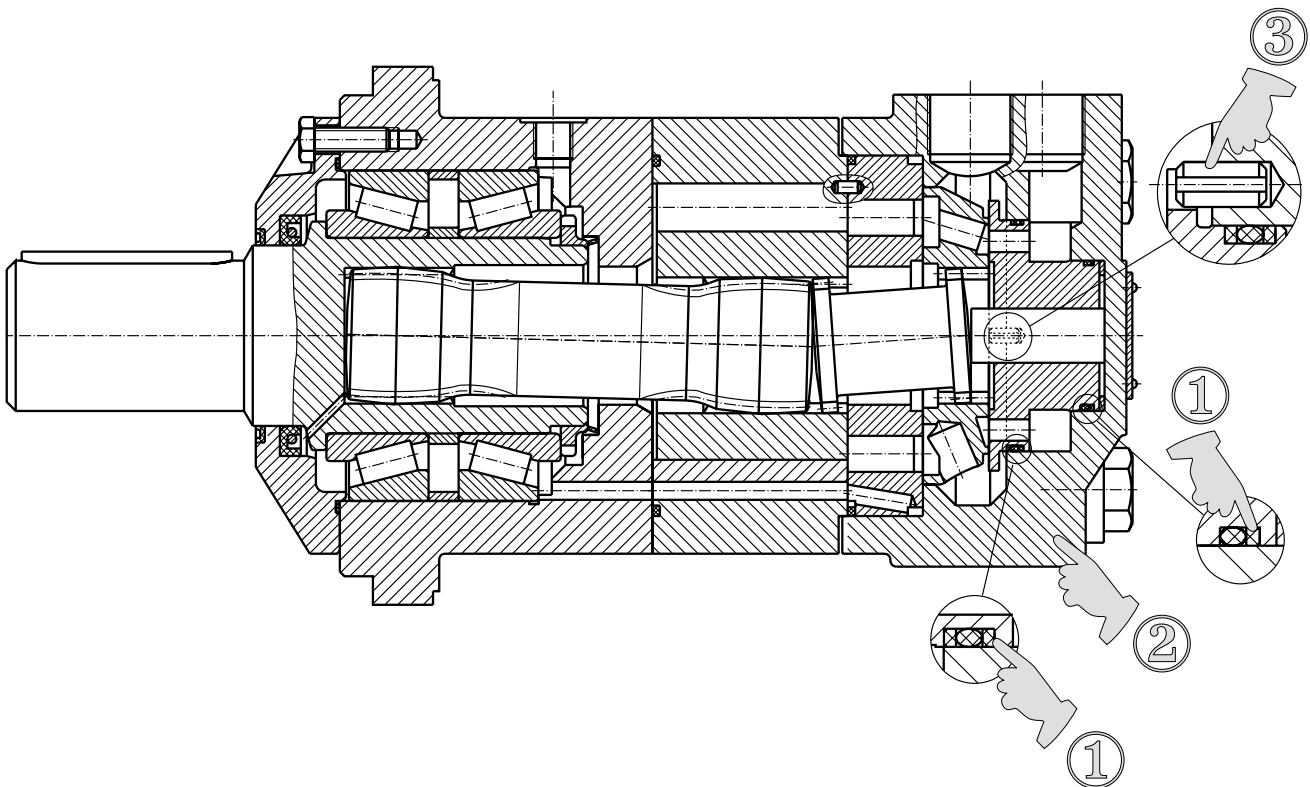
Hydraulic motors type MV...HD

INTRODUCTION

M+S Hydraulic introduces the new hydraulic motor MV...HD with reinforced components designed to withstand high torques produced by frequent reversing.



NOTE: A drain line should always be used!



The reinforced MV...HD motors deviate from standard range on the following points:

1. In order to protect the O-ring during the high pressure peaks, the balance plate has been provided with a back-up ring.
2. As the drain line is always connected in a certain applications where operating conditions are hard the check valves have been removed.
3. In order to reduce the load, the balance plate pin has been moved away from the plate center.

The main technical features correspond to the standard motors series MV.
For detail technical and mounting data please refer to M+S catalogue.