

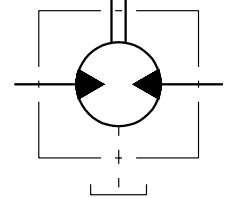
Quality assured company - ISO 9001 certified



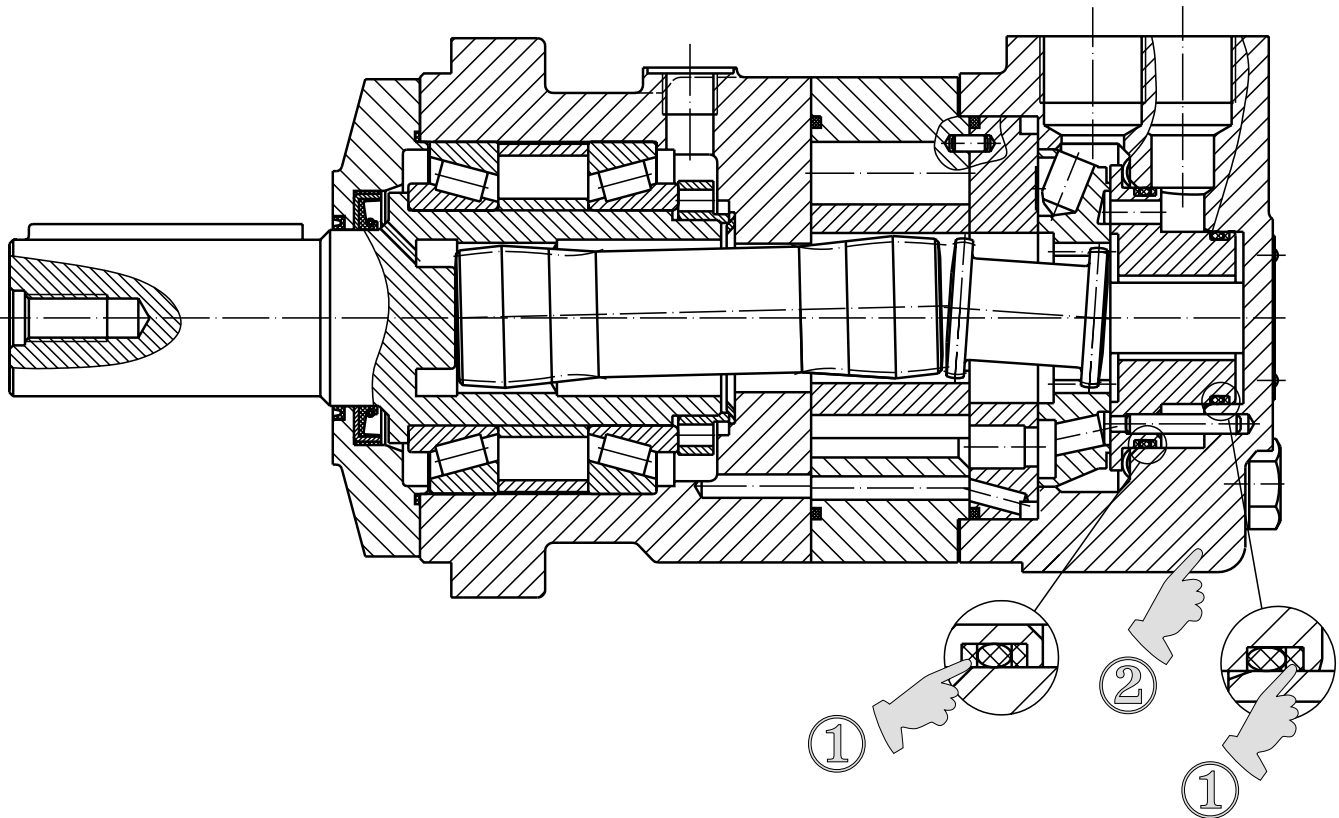
M+S HYDRAULIC

Product Tech News

M+S Hydraulic introduces the new hydraulic motor MT...HD with reinforced components designed to withstand high torques produced by frequent reversing.



NOTE: A drain line should always be used!



The reinforced MT...HD motors deviate from standard range on the following points:

1. In order to protect the O-ring during the high pressure peaks, the balance plate has been provided with a back-up ring.
2. As the drain line is always connected in a certain applications where operating conditions are hard the check valves have been removed.

The main technical features correspond to the standard motors series MT.
For detail technical and mounting data please refer to M+S catalogue.